



# XenServer 6.1.0 Licensing FAQ

CTX134888 | Created on Apr 22, 2014 | Updated on Apr 22, 2014

Article | Topic : Licensing

[See Applicable Products](#)

## Question and Answers

This article contains frequently asked questions about licensing for XenServer 6.1.0.

Citrix XenServer 5.6 and later versions support Citrix centralized licensing for all paid editions of the product. In XenServer Advanced, Enterprise, and Platinum Editions, customers must allocate the product licenses by using a Citrix License Server, just as with other Citrix components. With this change, license allocation is managed centrally and enforced by a standalone Citrix License Server, physical or virtual, in the environment. For detailed information on XenServer Licensing, refer to [CTX134586 - XenServer 6.1.0 Installation Guide](#).

## Contents

[Licensing Steps Overview](#)

[Licensing XenServer](#)

[Citrix License Servers](#)

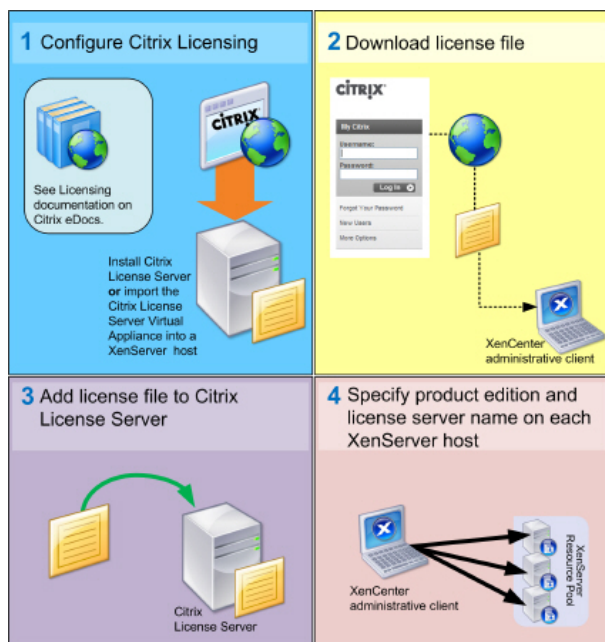
[Licensing a XenServer Pool](#)

[Other Questions](#)

## Licensing Steps Overview

To license XenServer you will need the following items:

- A XenServer License
- A Citrix License Server
- A XenServer host
- XenCenter



## Licensing XenServer

### Q. Where can I purchase a XenServer License?

A: You can purchase a XenServer License from <http://citrix.com/buy>

### Q: How is the paid version of XenServer licensed?

A: Paid editions of XenServer (Advanced, Enterprise, and Platinum) require a .LIC license key. This license key should be installed on either:

- The Windows PC running the Citrix License Server software
- or

- The Citrix License Server virtual appliance.  
During the XenServer boot process, each host will attempt to check out a license.

**How do I know how many licenses are in use and available?**

A: Customers can view the number of licensed components as well as their current usage in the License Administration Console Dashboard of the Citrix License Server.

**Q: How is Free XenServer licensed?**

A: Free XenServer users can download a license file in .XSLIC format and apply it to each individual host in the pool. Details on installing free licenses can be found in CTX134586 - XenServer 6.1.0 Installation Guide Section 9.1 - Activating a Free XenServer Product.

**Note:** The Free XenServer EULA requires contact and usage information to be updated annually.

**Q: Will I lose my Virtual Machine (VM) if my license expires?**

A: No, you will not lose any VMs or their data. If a license is not available, VMs will not start, although currently running VMs will continue to operate normally.

**Q. What happens if I don't set up a Citrix License Server or if the License Server is unavailable?**

A. For new installations the product will provide 30 days grace license. During this period, customers can use all of the free features of the product without a license.

If a XenServer installation has previously been licensed, the license has not expired and yet the License Server is unavailable, then customers will receive a grace period of 30 days at the licensing level that was applied previously.

**Citrix License Servers**

**Q: Which License Servers can I use with XenServer?**

A: You can use both the Citrix License Server software (that runs on a Microsoft Windows PC), or the Linux-based Citrix License Server virtual appliance.

**Q: Can I use an existing Citrix License Server for XenServer?**

A: Yes. If your License Server is running version 11.6.1 or higher then it will be compatible with XenServer.

**Q: How do import my license onto the Citrix License Server?**

A: Complete the procedure [Importing Licence Files](#).

**Q: Can I run the License Server on my XenServer pool?**

A: Yes. You can install the Citrix License Server software on a Windows VM or import the Linux-based Citrix License Server virtual appliance. For ease of deployment, the Citrix License Server software is pre-installed on this Virtual Appliance, and it can run as a VM in your XenServer pool. XenServer operates with a 'grace' license until the License Server is able to boot.

**Q: Can I use the Windows version of the Citrix License Server with Xenserver?**

Q: Yes.

**Q: Can I use the Citrix License Server virtual appliance with XenServer Platinum Evaluation License?**

A: Yes. The Citrix License Server virtual appliance with XenServer Platinum Evaluation license is a fully functional Citrix License Server, which can be used with the preconfigured trial license, or with a standard Citrix .lic license file.

**Q Can I install Licenses for other Citrix products on a Citrix License Server virtual appliance, or on the Citrix License Server software installed on Windows.**

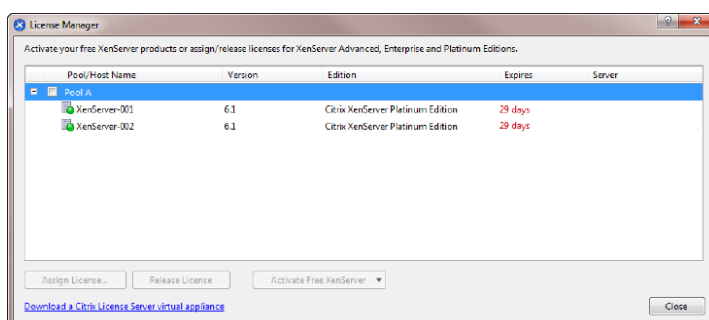
A: The Citrix License Server virtual appliance is only supported for XenServer licenses. However, the Citrix License Server software for Windows supports all Citrix licenses.

**Licensing a XenServer Pool**

**Q: How do I apply a license to all the hosts using XenCenter?**

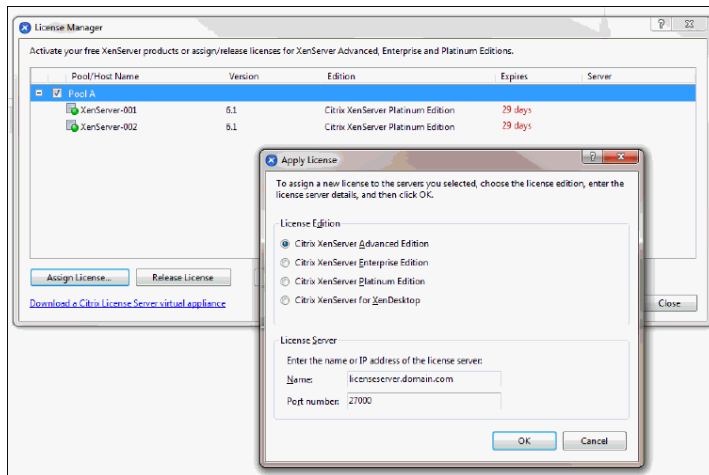
A: Complete the following procedure to apply a license:

1. Navigate to **Tools > License Manager**.



2. Select the hosts you would like to license, and click **Assign License**.
3. In the **Apply License** dialog, specify the license type you want to assign to the host, and enter the hostname or IP address of the Citrix License Server, as

shown in the following screen shot:



**Q: Can I apply a license without using XenCenter?**

A: Yes, you can use the xe CLI. Run the host-apply-edition command. For example, enter the following:

```
xe host-apply-edition edition=advanced|enterprise|platinum|enterprise-xd \license-server-address=<license_server_address> host-uuid=<uuid_of_host> \license-server-port=<license_server_port>
```

**Other Questions**

**Q: Can I mix license types in the same pool of servers, such as XenServer Enterprise and XenServer Platinum, or XenServer Platinum and XenServer for XenDesktop?**

A: Mixing license types in a single XenServer pool is not supported. A single license server can contain multiple license types, but each pool should maintain license consistency across all hosts.

**Q: How can customers obtain XenServer Platinum Evaluation Licenses?**

A: XenServer Platinum 90 day Evaluation Licenses are available at [www.citrix.com/xenserver](http://www.citrix.com/xenserver).

**Q: How do partners obtain Internal Use or Evaluation Licenses?**

A: Partners can obtain internal use or evaluation licenses from the standard My Citrix distribution methods.

**More information**

For more information about the XenServer 6.1.0 release, refer to [CTX134582 - XenServer 6.1.0 Release Notes](#)

For frequently asked questions about XenServer, refer to [CTX134887 - XenServer 6.1.0 FAQs](#)

Any non-technical issues with XenServer including, Subscription Advantage program support, licensing, administrative support, and order confirmation, can be raised through [Citrix Customer Service](#).

**Applicable Products**

- [XenServer 6.1.0](#)

Share your comments or find out more about this topic  
[Citrix Forums](#)