



# HDX RealTime Optimization Pack 2.6

## Contents

<b>HDX RealTime Optimization Pack 2.6</b>	<b>3</b>
<b>What's new</b>	<b>3</b>
New product names . . . . .	3
Support for Mac 64-bit architecture . . . . .	4
Support for Chrome OS using Citrix Workspace app 1809 for Android . . . . .	4
<b>Fixed issues</b>	<b>5</b>
<b>Known issues</b>	<b>5</b>
General known issues . . . . .	6
HDX RealTime Media Engine known issues . . . . .	8
Citrix Ready workspace hub (formerly known as HDX Ready Pi) issues . . . . .	9
Third party issues . . . . .	10
<b>System requirements</b>	<b>12</b>
Environments . . . . .	12
RealTime Connector . . . . .	13
RealTime Media Engine . . . . .	14
Third-party video drivers and the Optimization Pack . . . . .	16
<b>Technical overview</b>	<b>16</b>
Key features . . . . .	17
Limitations . . . . .	19
Considerations and recommendations . . . . .	21
Bandwidth guidelines for virtualized Skype for Business . . . . .	22
Citrix Customer Experience Improvement Program (CEIP) . . . . .	24
<b>Download</b>	<b>25</b>
<b>Install the RealTime Optimization Pack</b>	<b>26</b>
Deploy the RealTime Media Engine to your users . . . . .	27
Deploy the RealTime Media Engine to Windows devices . . . . .	27
Deploy the RealTime Media Engine to Mac devices . . . . .	28
Deploy RealTime Media Engine to Linux terminal devices . . . . .	29
Install the RealTime Connector on your servers and VDAs . . . . .	30
Install in to a Citrix Virtual Desktops environment . . . . .	30
Install into a Citrix Virtual Apps environment . . . . .	31
Exclude lync.exe from antivirus software scanning . . . . .	31
Disable the Optimization Pack . . . . .	31

<b>Upgrade</b>	<b>32</b>
Optimization Pack 2.x to this version . . . . .	32
Upgrade requirement for Linux . . . . .	33
Optimization Pack 1.x to 2.x . . . . .	33
Microsoft Lync VDI plug-in migration to Optimization Pack . . . . .	33
<b>Configure features</b>	<b>34</b>
RealTime Connector features . . . . .	34
RealTime Connector and RealTime Media Engine features . . . . .	36
<b>Configure firewalls</b>	<b>37</b>
<b>Troubleshoot the RealTime Optimization Pack</b>	<b>38</b>
Verify your installation and collect troubleshooting information . . . . .	38
Resolve poor performance . . . . .	43
Save crash logs for Dell Wyse terminals . . . . .	43
Resolve poor video quality . . . . .	43
Resolve poor quality or failed call connections on laptops running Windows . . . . .	44
Determine whether your firewall is blocking the RealTime Connector . . . . .	44
Resolve video quality issues when using a wireless network connection . . . . .	44
Resolve installation issues . . . . .	44
Notification area icon displays an unoptimized fallback operation . . . . .	46
Notification area icon does not appear . . . . .	47
Notification balloons do not appear . . . . .	47
Sound issues and slow call establishment . . . . .	47
Skype for Business does not recognize the webcam . . . . .	47

## HDX RealTime Optimization Pack 2.6

September 11, 2018

The HDX RealTime Optimization Pack provides a scalable solution for delivering audio-video conferencing and Voice over Internet Protocol enterprise telephony through Microsoft Skype for Business. The Optimization Pack supports Citrix Virtual Apps and Desktops environments to users on Linux, Mac, Windows, Chrome OS, and (through a partnership with Dell) Wyse ThinOS devices. The Optimization Pack uses your existing Microsoft Skype for Business infrastructure, on premises or in the cloud, and inter-operates with other Microsoft Skype for Business endpoints running natively on devices.

The Optimization Pack consists of both client and server components:

- **Client component.** The HDX RealTime Media Engine and Citrix Workspace apps integrate on the endpoint device and performs media processing directly on the user device. It offloads the server for maximum scalability, minimizing network bandwidth consumption, and ensuring optimal audio-video quality.

The RealTime Optimization Pack Capability Checker for Windows determines endpoint ability to support the Optimization Pack. For information, see <https://support.citrix.com/article/CTX222459>.

- **Server-side (and virtual desktop) component.** The HDX RealTime Connector is a connector to the virtualized Microsoft Skype for Business client that runs on the Citrix Virtual Apps and Desktops servers. It drives the RealTime Media Engine on the endpoint. The RealTime Connector runs in the virtual server environment alongside Microsoft Skype for Business. It communicates signaling information over a Citrix ICA virtual channel to the RealTime Media Engine running on the user device.

The Optimization Pack supports users who are on the corporate network or working remotely. For information about configuring secure remote access to Skype for Business using the HDX RealTime Optimization Pack, see <https://support.citrix.com/article/CTX201116>.

## What's new

September 12, 2018

### New product names

If you've been a Citrix customer or partner for a while, you'll notice new names and editions in our products and documentation.

The new product and component names stem from the expanding Citrix portfolio and cloud strategy.

Implementing this transition in our products and their documentation is an ongoing process. Articles in this product documentation use the following names.

- **Citrix Virtual Apps and Desktops:** Citrix Virtual Apps and Desktops offers a virtual app and desktop solution, provided as a cloud service and as an on-premises product, giving employees the freedom to work from anywhere on any device while cutting IT costs. Deliver Windows, Linux, web, and SaaS applications or full virtual desktops from any cloud: public, on premises or hybrid. Virtual Apps and Desktops was formerly XenApp and XenDesktop.
- **Citrix Workspace app:** The Citrix Workspace app incorporates existing Citrix Receiver technology as well as the other Citrix Workspace client technologies. It has been enhanced to deliver additional capabilities to provide end users with a unified, contextual experience where they can interact with all the work apps, files, and devices they need to do their best work. For more information, see this [blog post](#).

**Note:**

For more detail about our new names, see <https://www.citrix.com/about/citrix-product-guide>.

## Support for Mac 64-bit architecture

The RealTime Media Engine supports the Citrix Workspace app for Mac 64-bit operating systems.

## Support for Chrome OS using Citrix Workspace app 1809 for Android

The RealTime Media Engine supports Intel-based x86 Chromebook devices that can run Android apps (ARC++), used with the minimum version of the Citrix Workspace app 1809 for Android. Both the Workspace app and the RealTime Media Engine are released through the Play Store. For a list of supported Chromebooks and Chromeboxes (only those listed as **stable channel**), see [Chrome OS Systems Supporting Android Apps](#).

This release of the RealTime Media Engine doesn't support these features:

- External USB webcams.
- Camera encoding USB Video Class (UVC) 1.1.
- Device enumeration and switching from Skype for Business settings. Only default devices are used.
- G722.1C, RTAudio, and RTVideo codecs.
- Human interface devices, auto gain control, and Call Admission Control.
- In fallback mode, webcam and audio devices are not available because of limitations in the Citrix Workspace app for Android.

- Simulcast support in multiparty video conference calls.

## Fixed issues

September 11, 2018

- When you dial in to a Pexip Infinity conferencing device using the HDX RealTime Optimization Pack installed as an endpoint, attempts to establish a video or an audio call might fail. [LC9037]
- The HDX RealTime Media Engine might cause a delay in sending RTCP packets. This delay affects video performance. [LC9338]
- The HDX RealTime Optimization Pack is installed. If User1 and User2 establish a video call and escalate it to a conference call, the Skype for Business client might become unresponsive. [LC9714]
- The HDX RealTime Optimization Pack is installed. If User1 and User2 establish a video call using the Cisco Meeting Server (CMS), the video might become distorted. [LC9744]
- Start Skype for Business in the HDX RealTime Optimization Pack optimized mode. The NumLock status on the USB ten keyboard that is connected to the user device might turn to OFF. [LC9786]
- The HDX RealTime Optimization Pack is installed and optimized and a video call is established from Skype for Business between User1 and User2. When many processes are running on the VDA, the Skype for Business user interface might become unresponsive. [LC9845]
- The speakers are set as the default at the endpoint. This setting is different than the device selected in the Audio Device Settings in the Skype for Business user interface. When a call is established, the volume might drop to zero. [LC9887]
- The HDX RealTime Optimization Pack is installed. If User1 on a Mac initiates a video call to a Microsoft Windows (User2) machine and escalates to a conference call, there can be issues with the video. [LC9956]
- After you disable RealTime Media Engine logging, as described in Configure features, the disabling feature might fail to work and the logging continues. [LD0045]
- When a call is established from an HP 4120 IP phone that is connected to a Microsoft Windows endpoint through a USB device, the phone shows an active audio stream from the computer, as expected. After the call is disconnected, the audio connection is shown as active even though the user has not initiated audio capture or playback. [LD0331]

## Known issues

September 12, 2018

### **Important**

Editing the registry incorrectly can cause serious problems that might require you to reinstall your operating system. Citrix cannot guarantee that problems resulting from the incorrect use of Registry Editor can be solved. Use Registry Editor at your own risk. Be sure to back up the registry before you edit it.

### **General known issues**

- The Optimization Pack on Chrome devices might have issues when disconnecting and reconnecting a VDA session between clients if one client has the RealTime Media Engine installed and the other doesn't. The two scenarios are:
  - You are running an optimized VDA session on a client that has the RealTime Media Engine installed. You disconnect the session and reconnect the same VDA on a client without the RealTime Media Engine installed. The Optimization Pack disconnects because it can't switch to unoptimized (fallback) mode. Workaround: Exit and manually restart the Optimization Pack and it starts in unoptimized mode.
  - You are running an unoptimized VDA session on a client that doesn't have the RealTime Media Engine installed. You disconnect the session and reconnect the same VDA on a client that has the RealTime Media Engine installed. The Optimization Pack doesn't switch to optimized mode. Workaround: Exit and Exit and manually restart the Optimization Pack and it starts in optimized mode. [LOP-3126]
- Chrome OS users might experience a slight delay in video synchronization if the incoming video is sent from a device that doesn't support hardware encoding. As a workaround, use a UVC supported camera on those Windows and Linux endpoints that don't support hardware encoding. [LOP-3058]
- When a call is started on a Chrome OS device using a webcam microphone and a Polycom CX100 speaker or a built-in speakerphone/microphone, echo cancellation might not work. The remote participant in the call might hear their own voice at a low volume. Background sounds from the originator can also be heard. [LOP-3082]
- User1 starts a video call with User2, who is on a Mac. User1 resizes the desktop to full screen on a 5k monitor. The desktop scales to a full screen, the Skype conversation window scales with the desktop, but the Skype video fails to scale and stays small. [LOP-3223]
- If one of the parties to a video call unplugs the headset and then plugs it in, the call might stay on hold or fail. [LOP-3264]
- While changing resolution in a peer-to-peer or conference video call, the RealTime Media Engine on the Chrome OS might display a black frame for approximately 1 to 2 seconds. [LP-3207]

- When starting an audio point-to-point call and starting video at the same time, a **Cannot start video** message appears.

Workaround: Do not start an audio point-to-point call and video at the same time. [LOP-2356]

- In point-to-point calls using a UVC camera, or in a Meet Now, before a user starts transmitting video, the aspect ratio of the picture-in-picture video window might not display in the correct aspect ratio. On point-to-point calls, the video you're sending might be wider and include more content than what is visible in the picture-in-picture window. In Meet Now, after each participant becomes an active speaker, the aspect ratio changes to 16:9. [LOP-2462]
- We do not support two or more active network interfaces. For example, user1 has wired Ethernet and Wi-Fi enabled. User2 calls user 1 and connection problems occur causing the call to fail. [LOP-1822]
- The Optimization Pack is not compatible with the Polycom RealPresence Trio 8800. If you use the Skype for Business UI to accept a call, but use the Polycom RealPresence Trio 88 to hang up the call, the call doesn't end. [#LOP-1983]
- After the called party using an IP phone accepts a video call as audio-only, the caller cannot add a third participant to turn the call in to a conference call. Workaround: The called party can add the third participant, after which all conferencing capabilities are available. [LOP-1504]
- If Mac OS X user changes the dock UI setting while Skype for Business is running, current and future calls don't display local or remote video.

Workaround: Restart Skype for Business. [LOP-1062]

- If a caller plugs in another human interface device (HID) during an active call, the call might drop. [LOP-1377]
- Skype for Business might crash at startup after RealTime Connector is installed.

Workaround: Restart Skype for Business. [608171]

- Some headset devices (for example, Polycom and Plantronics) are mistaken for speaker phone or handset devices.

Workaround: Restart Skype for Business [605349]

- If Citrix Receiver for Mac 12.0 is on the endpoint device and a Human Interface Device (HID) is removed after Skype for Business and RealTime Optimization Pack are running, the RealTime Media Engine might crash.

Workaround: Upgrade your version of Citrix Receiver for Mac to a more recent version. [612448]

- Skype for Business might crash when exiting a video conference call or when exiting from the notification area. [612444, 612115, 610894]



- Optimization Pack, does not appear in the Citrix Receiver for Windows Support Info generated from the Advanced Preferences menu. [608200, LOP-650]
- When a public switched telephone network (PSTN) gateway is configured to generate custom ringback tones, the Skype for Business built-in ringback tone might be heard for a short period before the gateway ringback is heard. [LOP-1243]
- When fallback mode is set to audio only, and the users in fallback mode participate in a video conference, they might see their own states in the participant list incorrectly displayed as **On Hold**. Other users are not affected. [LOP-1175]

### HDX RealTime Media Engine known issues

- When a Mac user upgrades the RealTime Media Engine to version 2.6, a message requesting the keychain password might appear. As a workaround, choose one of these options:

**Allow** - allows the permission only once and the user must enter the keychain password again when the Citrix Workspace app for Mac invokes the RealTime Media Engine.

**Deny** - doesn't allow the RealTime Media Engine to collect crash reports provided by the HockeyApp.

**Always Allow** - the user no longer receives a prompt for that particular keychain entry. The user has to choose this option once for every keychain entry. [LOP-3286]

- The RealTime Media Engine v2.0.5 causes a slideshow effect in conference video calls when interoperating with 2.1.X and above.

Workaround: Disable H264UC codec:

Add DWORD DisableH264UC in the registry:

[HKEY\_CURRENT\_USER\Software\Citrix\HDXRTConnector\MediaEngine\CodecSettings]

“DisableH264UC=dword:000000001

The codec is enabled if the value is absent or set to 0, and is disabled if the value is present and set to 1. [LC6665]

- When a user (user2) on a Mac tries to use the RealTime Media Engine that another user (user1) installed, user2 might not receive an optimized experience.

Workaround: On a Mac, install the RealTime Media Engine by using the actual user's logon. [LOP-2203]

- **For Citrix Receiver for Windows versions 4.2 and earlier**- Uninstalling the Citrix Receiver, uninstalls HDX Real Time Media Engine. You must reinstall HDX Real Time Media Engine after installing Receiver. For more information, see <https://support.citrix.com/article/CTX200340>. [#484913]

- Sometimes, when attempting to install HDX RealTime Media Engine on Windows, a message indicates that there is no available disk space. However, limited space does exist on the Z:/ drive of the terminal. This is a known issue for Microsoft installers and applies to Citrix Receiver as well.
- During installation or un-installation, it is possible to encounter certain error conditions where the error message string is not localized. [14530, 93]
- In Seamless mode, the following issues exist for Full Screen video:
  - Full Screen video appears in letterbox format with the Linux version of the RealTime Media Engine in Seamless mode. [#13564]
  - The Full Screen Control hides behind other apps in a Seamless session in XenApp Seamless mode. [10731]

### **Citrix Ready workspace hub (formerly known as HDX Ready Pi) issues**

- When you use the RealTime Media Engine on the Citrix Ready workspace hub, the buttons on audio devices that have Human Interface Design (HID) functions do not work. You can use these devices as plain audio devices. [LOP-1634]
- Video capture issues sometimes occur when using a Logitech 310 or Logitech 9000 camera and the Citrix Ready workspace hub. The **Preview** option might not work, call initialization might be slow, calls placed on hold might not resume, or the camera fails during a call.  
Workaround: If the preview tries to display but fails, select **Start my video**. [LOP-2268, LOP-2339]
- Connecting a USB audio device to the Citrix Ready workspace hub while Skype for Business is running might cause a loss of the wired Ethernet connection. For optimal performance, we recommend that you connect your USB video camera and audio device to the Citrix Ready workspace hub as part of your setup procedure. If you lose the wired Ethernet connection because of disconnecting or reconnecting a USB device, restart the Citrix Ready workspace hub. [LOP-2523]
- USB devices on the Citrix Ready workspace hub might lock up when Skype for Business starts or during a MeetNow call.  
Workaround: Restart the Citrix Ready workspace hub. [LOP-2527]
- Acoustic echo cancellation might not work. Using the Citrix Ready workspace hub with a microphone and speakers can generate echo that is heard by the other parties to the call. [LOP-2538]
- A user on the Citrix Ready workspace hub and Stratodesk who makes an outgoing audio call might not hear any audio. That includes a ring back tone and voice.  
Workaround: Open the Stratodesk system configuration **Audio** tab and set **Standard audio device** to **Analog**. [LOP-2579]

- On the Citrix Ready workspace hub and a Stratodesk image using XenDesktop 7.6, the Picture in Picture and incoming video windows might appear as blue screens.  
Workaround: Disable HDX 3D Pro H.264 acceleration. [LOP-2588]
- Sending or receiving high resolution video on the Citrix Ready workspace hub might cause audio distortion.  
Workaround: During video calls with Citrix Ready workspace hub devices, do not enlarge the video window. [LOP-2613]

### Third party issues

- Using a Logitech C930e camera that has a pre-8.0.875 firmware version might cause the picture-in-picture to freeze on either side of the call.  
Workaround: Upgrade your firmware to a minimum of 8.0.875. For more information, see [https://support.logitech.com/en\\_us/product/webcam-c930e-business](https://support.logitech.com/en_us/product/webcam-c930e-business). [LOP-2571]
- The Windows 10 Anniversary Update (August 2016) has issues with web cameras and H.264. These issues might cause unnecessary bitrate adaptation problems in RealTime Optimization Pack to RealTime Optimization Pack video calls. The problem is constant video resolution changes on your Windows 10 endpoints.  
Workaround: Add this registry key to the Windows 10 endpoint.  
[HKEY\_LOCAL\_MACHINE\SOFTWARE Wow6432Node\Microsoft\Windows Media Foundation\Platform]  
"EnableFrameServerMode"=dword:00000000 [LOP-1985]
- If Microsoft .NET Framework 4.6 is installed using the default configuration, RealTime Connector on 64-bit Windows might crash or become unstable. For possible workarounds, see [RyuJIT settings cause managed applications to crash after you install Microsoft .NET Framework 4.6](#). [LOP-1278]
- There might be problem dialing dual tone multi frequency (DTMF) digits using a Jabra Pro 9465 device on a Linux client.  
Workaround: Use the RealTime Optimization Pack interface to dial the DTMF digits. [547234]
- Citrix RealTime Optimization Pack does not support the Plantronics Clarity **P340** audio device but does support the **P340-M** (Skype for Business qualified device). [597048, 603639, 608218]
- On Mac OS X, Citrix RealTime Optimization Pack does not support Hewlett-Packard 4310, Hewlett-Packard 2300, and Microsoft LifeCam Studio webcams for point to point calls. [LOP-2371]
- Linux might mistake some audio devices containing buttons for a Human Interface Device (mouse) instead of an audio device. When a user presses a button, Linux interprets it as a mouse button press and prevents the regular mouse from working correctly until the call ends.

Workaround: Configure the Linux X11 graphics subsystem to ignore the devices as sources of user input. Create or change a **.conf** file in the **/usr/share/X11/xorg.conf.d** directory with the following sections (for example, Jabra, Plantronics, or Sennheiser). [521088]

Section "InputClass"

Identifier "Jabra"

MatchVendor "Jabra"

Option "Ignore" "True"

EndSection

Section "InputClass"

Identifier "Plantronics"

MatchVendor "Plantronics"

Option "Ignore" "true"

EndSection

Section "InputClass"

Identifier "Sennheiser"

MatchVendor "Sennheiser | 1395"

Option "Ignore" "true"

EndSection

- The microphone volume level of some Linux clients is low.

Workaround: Increase the microphone level using the Linux system volume control.

- The microphone volume level of the Polycom CX100 speakerphone is low even at its full level when used with the HP Thin Pro client.

Workaround: Change the registry key that comes with the HP Thin Pro by using the regeditor program on the client. You can run the program as root or from the Registry Editor component of the Profile editor.

These settings limit the range of available settings on the input volume slider. The RecordScale default value of 100 limits it to 25% of its maximum value for the microphone jack. Setting RecordScale to the maximum value of 400 allows the slider access to the entire scale. [604219]

root>Audio>

Value name: RecordScale

Value data: 400 (Default is 100)

Value name: RecordScaleAuto -

Value data: 0 (Default is 1- sets to 100)

1 Sets RecordScale value based on hardware type.

2 Does not set RecordScale value based on hardware type.

For playback, these controls work the same way as the input volume controls.

root>

Value name: OutputScale

Value data: 400 (Default is 100)

Value name: OutputScaleAuto

Value data: 0 (Default is 1)

- You might encounter errors with Skype (not Skype for Business) on iOS 9.2.  
Workaround: Upgrade to iOS 9.3.2 [LOP-1313]
- If you have more than one camera connected to an endpoint and you want to use the second camera for videos or video previews, open **Tools > Video Device Settings** and select the camera and click **OK**. [LOP-1397]
- If Skype (not Skype for Business) fails to connect video from the RealTime Optimization Pack in a video call, you might see a black screen or a still video from the RealTime Optimization Pack user. [LOP-1295]

## System requirements

September 12, 2018

### Environments

The RealTime Optimization Pack supports the following Microsoft Skype for Business configurations:

- **Server** (back end)
  - Microsoft Skype for Business server 2015
  - Microsoft Skype for Business Online (Microsoft Office 365 hosted Skype for Business Server)
  - Microsoft Lync 2013 server - Updated to at least the February 2015 Cumulative Update. Citrix and Microsoft recommend updating to the most recent Cumulative update.

- **Client** (the Skype for Business application installed on the Citrix Virtual Apps and Desktops server). To benefit from the latest fixes and security updates, we recommend that you install the latest version of the Skype for Business client.

For information about configuring the Skype for Business 2015 client in native UI mode, see <https://technet.microsoft.com/library/dn954919.aspx>.

- Microsoft Skype for Business 2016 Click-to-Run minimum version 1611 Build 7571.2072.
- Microsoft Skype for Business 2016 MSI minimum version 16.0.4483.1000.
- Microsoft Skype for Business 2015 stand-alone installer (which can be installed on top of Microsoft Office 2016) minimum version 15.0.4875.1001.
- Microsoft Office Professional 2013 with Lync and at least the June 2016 Microsoft Office Public Updates. Citrix recommends having the latest updates. The client must be configured in native Skype for Business UI mode.

The Optimization Pack supports the following Citrix environments:

- Citrix Virtual Apps and Desktops 7 1808
- XenDesktop 7.18, 7.17, 7.16, 7.15 CU1/CU2, 7.15, 7.14, 7.6 LTSR
- XenApp 7.18, 7.17, 7.16, 7.15 CU1/CU2, 7.15, 7.14, 7.6 LTSR, 6.5, and 6.0

For more information about Citrix Virtual Apps and Desktops editions that include Skype for Business optimization, see [Citrix Virtual Apps and Desktops features](#).

The Optimization Pack supports the following Citrix Workspace app and Citrix Receivers:

- Citrix Workspace app 1808 for Windows
- Citrix Workspace app 1808 for Mac
- Citrix Workspace app 1808 for Linux
- Citrix Workspace app 1809 for Android
- Citrix Receiver for Windows 4.x
- Citrix Receiver for Mac 12.x
- Citrix Receiver for Linux 13.x

## RealTime Connector

You install the RealTime Connector on Citrix Virtual Desktops virtual desktops or on servers in your Citrix Virtual Apps site.

- Supported operating systems:
  - Desktops: Microsoft Windows 10, 8.1, 7
  - Servers:
    - \* Microsoft Windows Server 2016
    - \* Microsoft Windows Server 2012 R2
    - \* Microsoft Windows Server 2008 R2

- Memory: minimum 4-GB RAM, 120-MB paging file
- Disk space: minimum 100-MB available
- Network interface: full-duplex Ethernet TCP/IP local network connection
- Software:
  - DirectX 9 (minimum)
  - Microsoft .NET 4.0 SP1
  - Microsoft Skype for Business 2015 client - minimum Product Update 15.0.4833.1001 (32-bit or 64-bit)
  - Microsoft Skype for Business 2016 client - minimum Product Update 16.0.7341.2032 (32-bit or 64-bit)

#### Installation prerequisite

1. Right-click the Microsoft Skype for Business shortcut on your desktop or in the list of programs in the Start menu and choose **Properties**.
2. In the Properties dialog box, select the **Compatibility** tab.
3. On the Compatibility tab, ensure the **Run this program as an administrator** check box is cleared.

## RealTime Media Engine

You install the RealTime Media Engine on the client device.

See [citrixready.citrix.com](http://citrixready.citrix.com) for HDX Premium client devices verified for Optimization Pack.

Hardware guidelines when H.264 hardware acceleration is unavailable:

CPU:

Results vary based on processor architecture.

- For CIF (standard) video, 1.4 GHz
- For VGA, a minimum of 2 GHz.
- For 720p HD (high definition) video, 2.8 GHz dual core
- Support for SSE3 instruction set

Disk space and memory:

- 50 MB disk space
- 1 GB total RAM

Supported operating systems:

You can install the RealTime Media Engine on devices running any of the following operating systems:

- Microsoft Windows Desktop: Microsoft Windows 10, Microsoft Windows 8.1, Microsoft Windows 7

- Microsoft Windows devices: Microsoft Windows 10 IoT Enterprise, WES 7, WES 8
- Linux 32-bit
  - Ubuntu 16 and 15.10
  - Red Hat 7
  - CentOS 7
  - HP ThinPro
- Linux 64-bit
  - Ubuntu 16.04 and 15.10
  - Red Hat 7
  - CentOS 7
  - HP ThinPro
  - IGEL
- Mac OS X 10.13.x, 10.12.x, and 10.11.x
- Chrome OS
- Unicon - Contact Unicon for the version of eLux that they recommend for use by the RealTime Media Engine 2.6

### **Important**

Editing the registry incorrectly can cause serious problems that might require you to reinstall your operating system. Citrix cannot guarantee that problems resulting from the incorrect use of the Registry Editor can be solved. Use the Registry Editor at your own risk. Be sure to back up the registry before you edit it.

The Microsoft Windows 10 Anniversary Update released in August 2016 introduces a new feature called Windows Camera Frame Server. This feature might cause issues including disabling hardware encoding in webcams.

To avoid these issues, install Microsoft updates KB3176938 (Windows 10 CU released on August 31, 2016) and KB3194496 (Windows 10 CU September 29, 2016) for RealTime Media Engine on Windows 10. If you still see performance issues after installing the updates, make these registry changes:

```
HKEY_LOCAL_MACHINE\SOFTWARE\Microsoft\Windows Media Foundation\Platform
EnableFrameServerMode=dword:00000000
```

```
HKEY_LOCAL_MACHINE\SOFTWARE\Wow6432Node\Microsoft\Windows Media Founda-
tion\Platform
EnableFrameServerMode=dword:00000000
```

### **Requirements for audio and video calling:**

- The RealTime Media Engine can support video calls in high-definition (HD) video. If the camera, host device, bandwidth setting, and remote endpoint support high-definition specifications, the RealTime Media Engine measures the speed of the user device. It then encodes HD video.



- Camera:
  - Most USB webcams are supported.
  - Minimum resolution: 320 x 240
  - Color space: 1420 or YUY2
  - Frame rate of at least 10 fps, 24 fps for HD video
  - Windows UVC driver
- Audio I/O must be DirectSound compatible and capable of 16-bit mono or stereo sound at 16,000, 32,000, or 44,100 samples per second. We recommend a USB headset.

Requirements for Skype for Business compatible audio devices:

The RealTime Connector supports Skype for Business-compatible USB headsets, speaker phones, and phones. For full information about supported devices, see [Skype for Business Solutions](#).

### **Third-party video drivers and the Optimization Pack**

Windows USB video class (UVC) drivers for web cameras have been included in Microsoft Windows operating systems for many years. Microsoft Windows operating systems on some thin client terminals might not include those drivers. If you install a web camera on a terminal device, the installation program might report that it doesn't have the required files.

We recommend that you use the standard Windows device drivers for webcams. Vendor-supplied drivers can sometimes cause crashes and Blue Screen events on certain platforms (especially 64-bit Windows).

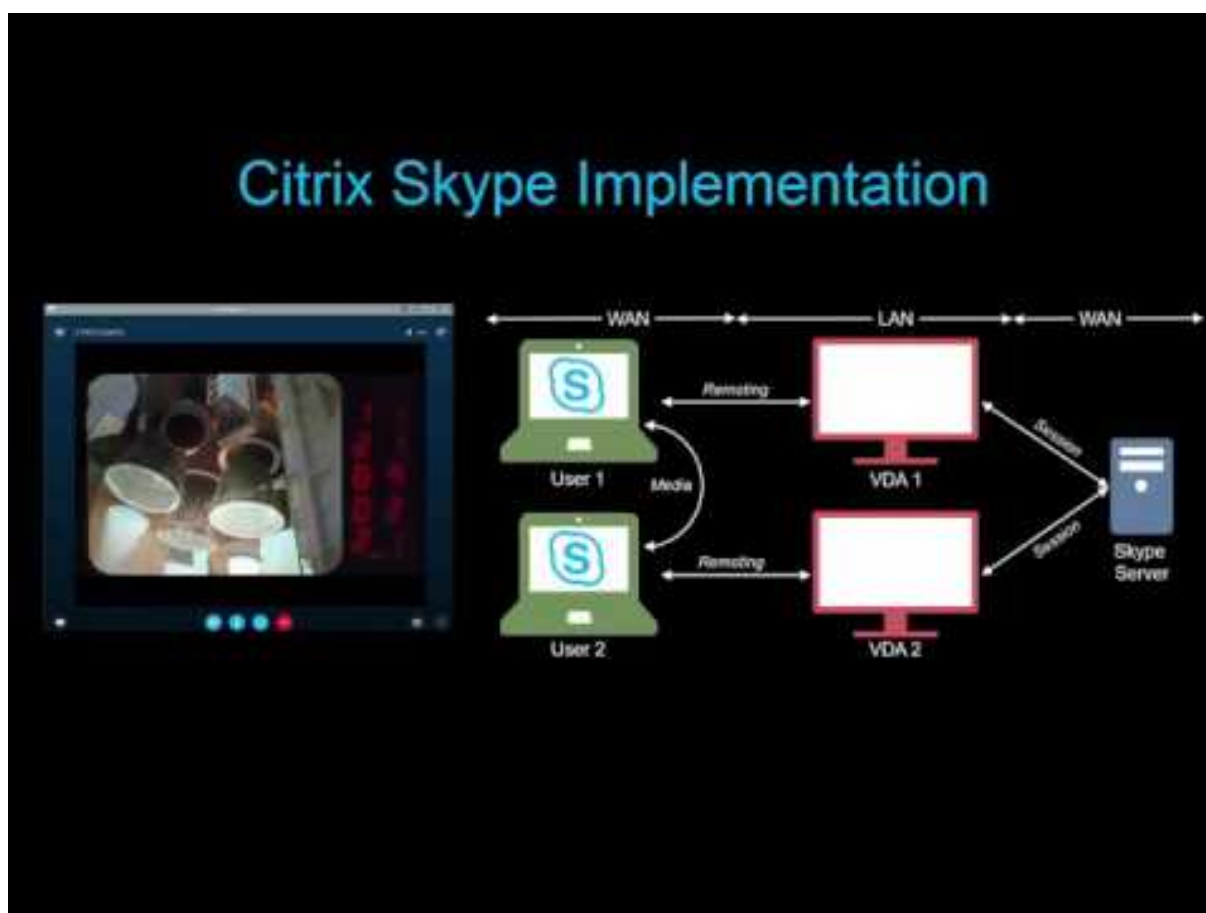
### **Technical overview**

September 14, 2018

The RealTime Optimization Pack offers clear, crisp high-definition audio/video calls with Microsoft Skype for Business in an optimized architecture. Users can seamlessly participate in audio-video or audio-only calls to and from other:

- Skype for Business users
- Microsoft Lync users
- Standards-based video desktop and conference room multipoint control unit (MCU) systems
- Standalone IP phones compatible with Skype for Business

All audio/video processing is offloaded from the Server to the end-user device or terminal, optimizing the quality of the call with minimal impact on server scalability.



### Key features

The Optimization Pack provides Citrix Virtual Apps and Desktops customers the following key features:

- Optimizes Skype for Business audio and video calling on Windows, Mac, Chrome OS, and Linux devices by redirecting media processing to the user device. Our partner, Dell, supports Wyse ThinOS.
- Co-developed with Microsoft, who developed and maintains the native Skype for Business client user interface. The advantage is that there is no UI hooking by the Citrix software. Users see the familiar native Skype for Business interface.
- Simulcast video transmission (multiple concurrent video streams) to optimize video quality on conference calls and Skype Meetings.
- Compatible with Skype for Business Server 2015, Lync Server 2013, and Skype for Business Online (Office 365).
- Enables call initiation from the Skype for Business dialpad, dial-in bar, contacts list, Conversation window, and Outlook or other Office application.
- Supports all Skype for Business calling and conferencing scenarios. That includes audio and video calling, hold, transfer, call forking and redirection, active speaker conferencing, and simul-

cast video.

- Compatible with Skype for Business protocols for networking, media encryption (SRTP/AES), firewall traversal (STUN/TURN/ICE), and bandwidth management.
- Forwards device location information to the Skype for Business client, to support Emergency Services (for example, E911) and Location Based Routing (LBR).
- Supports these audio codecs: SILK, G.771, G.722, G.722.1, G.722c, and RT-Audio. We don't support the G.722 Stereo and the Siren low bandwidth codec. This support enables voice communications over a wide range of network environments, including the public internet and mobile networks.
- Field-proven compatibility with a broad range of audio devices, conferencing bridges, gateways, and server and network-based recording solutions. For recommended products, see [Citrix Ready Marketplace](#).
- Supports RT-Video, H.264 UC, H.264 Scalable Video Coding (SVC), and H.264 Advanced Video Coding (AVC). Video call rates range from 128 kb/s to 2048 kb/s. All video is encoded at up to 30 fps (depending on the webcam used) and transmitted over RTP/UDP (preferred) or TCP.
- Uses hardware H.264 encoding on Windows devices that support AMD VCE or Intel Quick Sync, subject to compatibility. We recommend using the latest driver versions.
- Supports most webcams, including built-in webcams on Windows devices and built-in webcams (Facetime cameras) on Mac devices.
- Uses the hardware acceleration capabilities of UVC 1.1/1.5 H.264 hardware-encoding webcams with Windows and Linux devices (not including the Citrix Ready workspace hub).
- Supports a wide range of video resolutions, from 320x180 to 1920x1080, at up to 30 frames per second.
- Supports Quality of Service (QoS) by observing the audio and video port ranges configured on the Skype for Business server (see [https://technet.microsoft.com/en-us/library/jj204760\(v=ocs.15\).aspx](https://technet.microsoft.com/en-us/library/jj204760(v=ocs.15).aspx) and <https://technet.microsoft.com/en-us/library/gg412969.aspx>).
- Supports Differentiated Services Code Point (DSCP) marking for media packets. For Windows, distribute the QoS policies to the endpoints. For Linux, Chrome OS, and Mac OS X, there are Optimization Pack registry settings that must be applied in the user profile on the server. For more information, see <https://support.citrix.com/article/CTX215691>.
- Optimizes Quality-of-Experience (QoE) through adaptive jitter buffer, packet loss concealment, call rate adaptation, and other techniques.
- If there is no RealTime Media Engine present on the user device, provides fallback to server-side media processing (Generic RealTime).
- Improves audio and video quality over lossy connections by enabling forward error correction (FEC).
- Call Admission Control on the Skype for Business server improves media quality in enterprise networks. It does so by tracking media bandwidth usage and denying calls that would overload the network by using too much bandwidth.

- When enabled by administrators, all audio and video calls made with the Optimization Pack inform the Skype for Business server infrastructure about bandwidth usage. The calls follow all bandwidth policy constraints, including:
  - Limits audio and video bandwidth as required by the policies.
  - Downgrades video calls to audio only if bandwidth for video is not available. A generic message displays.
  - Reroutes the call through the internet when bandwidth on the corporate network is not available. A generic message displays.
  - Reroutes the call to voicemail when bandwidth is not available anywhere. A generic message displays.
  - Reports Call Admission Control bandwidth constraints to the Quality-of-Experience monitoring database.
- Call Admission Control works in all network configurations supported by Microsoft. That is, multiple regions, sites, links, routes, policies, and so forth. It works for both on-premises and remote endpoints. On remote endpoints, just as with native Skype for Business clients running remotely, only internal portions of the media path are subject to Call Admission Control bandwidth policies.
- The RealTime Media Engine uses the Citrix Workspace app for Windows auto-update capability and policy controls.
- Single download, single install bundle of Citrix Workspace app for Windows and the RealTime Media Engine. The single install bundle is ideal for first-time users on unmanaged devices.

### Limitations

When you deliver the Skype for Business client in a virtualized environment, there are a few feature differences. For more information, see <https://support.citrix.com/article/CTX200279>.

#### Warning

Editing the registry incorrectly can cause serious problems that may require you to reinstall your operating system. Citrix cannot guarantee that problems resulting from the incorrect use of the Registry Editor can be solved. Use the Registry Editor at your own risk. Be sure to back up the registry before you edit it.

- The dual-monitor Citrix Ready workspace hub configuration doesn't support video overlays. Therefore it is not compatible with the HDX RealTime Media Engine for Skype for Business.
- The Citrix Ready workspace hub doesn't support the webcam H.264 hardware encoding feature. All video encoding is done on the Citrix Ready workspace hub, which provides up to 640x360 video resolution.
- When using an HP T730 thin client with Windows 10 and a Logitech C925e web cam to make a video call, and then resizing the window to high definition resolution, a 30 fps video stream is

sent as a 24 fps video stream.

- If Skype for Business is running locally on your device, right-click the Skype for Business icon in the system tray and Exit the application. Interaction issues are likely when running Skype for Business locally while it is also running in the data center as a hosted application.
- Microsoft does not support the Lync and Skype for Business basic client with the Optimization Pack. Workaround: Use the full version of Skype for Business.
- The Optimization Pack does not support direct media connections to and from public switched telephone network (PSTN) gateways. There is an optional feature of Skype for Business, known as media bypass. For more information, see <https://technet.microsoft.com/en-us/library/gg412740.aspx> and <https://support.citrix.com/article/CTX200279>. If Skype for Business server administrators enable media bypass, PSTN calls involving Optimization Pack users automatically and transparently route media connections through the Mediation Server. This feature limitation doesn't cause user impact. Take this limitation in to account when planning network capacity.
- When the Skype for Business client is delivered as a published application rather than as part of a full Windows desktop, desktop sharing is not supported. If you use desktop sharing, the server desktop is shared rather than the local desktop. Application sharing can be used to share other hosted applications during a Skype for Business call. The virtualized Skype for Business client cannot share applications running locally on the user device.
- Client-side recording is not supported. Citrix recommends evaluating third-party server/network-based recording solutions.
- Gallery view is not supported in multiparty calls. Active speaker view is used in Skype for Business multiparty calls using the Optimization Pack.
- Panoramic webcams that deliver a 360-degree view of the meeting room are not supported.
- Optimized delivery (redirection of media processing to the user device) in a double-hop Citrix Virtual Apps and Desktops-Citrix Workspace app scenario is not supported.
- Web proxy limitations:
  - HTTP proxy authentication is not supported. Configure proxies using white lists to allow unauthenticated access to target Skype for Business servers (for example, Office 365 servers for cloud-based deployments).
  - Web Proxy Auto-Discovery Protocol (WPAD) and dynamic proxy detection are supported by using Windows endpoints only. Configure Linux and Mac endpoints using a static HTTP proxy address.
- On Linux terminals, the RealTime Media Engine installer disables multimedia redirection in the Citrix Workspace app for Linux. Thus, avoiding the Optimization Pack and the Citrix Workspace app for Linux/Unix getting into a conflict when accessing video devices. However, other unified communications applications cannot support Generic USB redirection when accessed on a Linux terminal that has the RealTime Media Engine installed.
- The date and time strings on USB telephone devices that have display capabilities are not prop-

erly localized.

- The Plantronics Clarity P340 audio device is not supported.
- The Optimization Pack disables the use of hardware acceleration for the Logitech C920 camera on Windows. Support is provided for the C920 as a nonencoding camera. To enable hardware compression for the Logitech C920 on Windows, do the following:
  1. Replace the Logitech driver with the stock Microsoft driver.
  2. Create a registry setting that enables hardware acceleration with the C920.

On 32-bit and 64-bit Windows:

HKEY\_CURRENT\_USER\Software\Citrix\HDXRTConnector\MediaEngine

Name: EnableC920Compression

Type: DWORD

Data: 1 (enables the hardware acceleration) and  
0 or missing (disables hardware acceleration)

**Note:** Logitech does not recommend the C920 for business use cases. We recommend the more modern Logitech cameras (C930E, C925E), which are compatible with standard Microsoft drivers.

## Considerations and recommendations

- The inclusion of hardware acceleration for video increases the amount of data being sent if you deploy devices that support hardware acceleration for video. Ensure that you have sufficient bandwidth available among all endpoints or update your Skype for Business server media bandwidth policies accordingly.
- In Fallback mode, video quality might degrade to the point of failure on virtual desktops that have a single virtual CPU. Fallback mode is when the RealTime Media Engine is not available on the endpoint and audio/video processing occurs on the server.

We recommend that you change the VDA configuration to have a minimum of two CPUs for users who might need Fallback mode. For more information, see <https://support.citrix.com/article/CTX133024> and <https://support.citrix.com/article/CTX132764>.

- Users might hear an echo or other artifacts when using any built-in microphone and speakers on endpoints.

We recommend that you use a headset on an endpoint or a speakerphone that has hardware-based echo cancellation.

- When attempting to make high-definition video calls from a home office, consider your user network bandwidth and ISP routing policies. If you observe pixelation of the video or problems

with lip sync, adjust the Maximum Packet Size (MTU) on the NIC properties. Specify a lower value such as 900 to avoid situations where ISPs perform traffic shaping based on packet size.

- Various scenarios (for example, combining content sharing and audio/video conferencing) might not work properly when some conversation participants run 1.x versions of the Optimization Pack.

We recommend participants using older versions of the Optimization Pack upgrade to this version of the Optimization Pack.

- Users might see an error when making a call or joining a session when they have multiple sessions running.

We recommend running only one session.

- Old versions of graphics card drivers might impact the stability of the Optimization Pack. H.264 hardware encoding and decoding on Intel and AMD chipsets works most reliably when using the latest versions of graphics drivers. The drivers are available from the endpoint or chipset vendors. If an unsupported driver version is detected, the Optimization Pack might automatically disable these features.

### **Bandwidth guidelines for virtualized Skype for Business**

In general, bandwidth consumption when using the HDX RealTime Optimization Pack is consistent with non-virtualized Skype for Business. The HDX RealTime Media Engine supports the audio and video codecs that Skype for Business commonly uses, and obeys the bandwidth restrictions configured on the Skype for Business server. If the network has been provisioned for Skype for Business traffic, the Optimization Pack might not require more traffic engineering. For new or growing deployments, network bandwidth, and Quality of Service provisioning, follow the Microsoft guidelines for voice and video. These guidelines apply when client endpoints are the sources and destinations of real-time media traffic.

Audio and video traffic in Optimized mode flows out-of-band from ICA. The only extra traffic generated by the Optimization Pack is from the:

- Low bandwidth ICA virtual channel control interactions between the RealTime Connector on the VDA server and the RealTime Media Engine on the client endpoint.
- Compressed logging data sent from the RealTime Media Engine to the RealTime Connector. This additional traffic amounts to under 25 Kbps of upstream ICA bandwidth and about 5 Kbps of ICA downstream bandwidth.

This table summarizes different types, sources, and destinations of network traffic with HDX RealTime Optimization Pack:

Network traffic type	Optimized mode	Fallback mode
Real-time audio and video streams sources and destinations	Client endpoints	VDA servers
Real-time A/V bandwidth usage	Follows Microsoft policies and usage requirements	Follows Microsoft policies and usage requirements
HDX audio and webcam bandwidth usage	Not used in optimized mode	Used in fallback mode; HDX audio and webcam bandwidth guidelines apply
Extra ICA usage by the Optimization Pack	5 kbps downstream, 25 kbps upstream	None
Content sharing sources, destinations, and bandwidth usage	Content sharing network streams always originate and end on VDA servers	Content sharing network streams always originate and end on VDA servers

For the Microsoft bandwidth guidelines for Skype for Business, see <https://technet.microsoft.com/en-us/library/gg293124.aspx>.

H.264 is the main video codec used by Skype for Business and the RealTime Optimization Pack. H.264 supports a wide range of video resolution and target bandwidth values. Skype for Business bandwidth usage policies always constrain bandwidth usage for video. In specific call scenarios, actual bandwidth usage might be even lower depending on current bandwidth availability and client endpoint capabilities. For HD video resolution in peer-to-peer calls, we suggest 1 Mbps or more and for VGA resolution, 400 Kbps or more. Conference calls might require more bandwidth to support HD video (we recommend 2 Mbps).

The Optimization Pack also supports the legacy RT Video codec for interoperability scenarios with legacy versions of Microsoft unified communication software. Bandwidth usage with RT Video is similar to H.264, but video resolutions using RT Video are limited to VGA or less.

Audio codec usage depends on the call scenario. Because the Microsoft Skype for Business Audio-Video Conferencing Server doesn't support SILK or RtAudio, these codecs are used only on point-to-point calls. Conference calls use G.722. SILK offers comparable audio quality to G.722 while consuming less bandwidth.

In addition to the codecs used by the native Skype for Business client, the HDX RealTime Media Engine offers a super-wideband codec, G.722.1C. This codec offers superior audio quality when both parties on a point-to-point call are using the Optimization Pack. This codec consumes 48 Kbps of network bandwidth. The Optimization Pack 2.4 doesn't support the ultra-low bandwidth Siren codec, which



is the predecessor to G.722.1. The Optimization Pack does support G.722.1 for interoperability with third-party systems, although Skype for Business does not support G.722.1.

The Optimization Pack automatically selects the best audio codec that all participants on the call support and fits within the available bandwidth. Typically:

- A call between two Optimization Pack users uses the super-wideband G.722.1C codec at 48 Kbps and has good audio fidelity.
- A conference call uses the wideband G.722 codec at 64 Kbps. That is, 159.6 Kbps with IP header, UDP, RTP, SRTP, and Forward Error Correction.
- A call between an Optimization Pack user and a native Skype for Business client user uses the wideband SILK codec at 36 Kbps. That is, 100 Kbps with IP header, UDP, RTP, SRTP, and Forward Error Correction.
- When an Optimization Pack user makes or receives a public switched telephone network (PSTN) call, one of the narrowband codecs is used: G.711 at 64 Kbps or narrowband RtAudio at 11.8 Kbps.

### **Citrix Customer Experience Improvement Program (CEIP)**

The Citrix CEIP usage and analytics program is a voluntary data collection program designed to improve your product experience. After installing this version of the Optimization Pack, you can participate in the programs anonymously.

You can change your participation in the program at any time. For more information, see <https://www.citrix.com/community/cx/ceip.html>.

CEIP is voluntary. When you opt-in, the CEIP services running in Citrix products gather anonymous configuration and usage data from your deployment, and automatically sends the data to Citrix. CEIP collects these classes of data:

- Configuration data.
- All system and account identifiers are anonymized before being uploaded.

How your privacy is protected:

- Citrix does not collect any personally identifiable data.
- Random identifier is created at install time, which tracks data transfers over time.
- Citrix does not record information such as IP addresses, server names, or domain names.
- All data is sent using HTTPS directly to Citrix servers - no third-party data hosting services.
- All data is secured on Citrix servers and is accessible only by authorized individuals.

### **CEIP Opt-out policies and the user interface (UI)**

The RealTime Connector defines the following registry entries controlling CEIP metrics:

HKEY\_LOCAL\_MACHINE\Software\Citrix\HDXRTConnector\  
DWORD DisableCEIPMetrics

If absent or set to **0**, the user controls the CEIP metrics collection. If present and set to nonzero, metrics collection is disabled and the opt-out UI is hidden.

On 64-bit Windows, the RealTime Connector checks both HKEY\_LOCAL\_MACHINE\Software\Citrix and HKEY\_LOCAL\_MACHINE\Software\Wow6432Node\Citrix for this value.

HKEY\_CURRENT\_USER\Software\Citrix\  
DWORD OptOutOfCEIPMetrics

If absent or set to **0**, the user did not opt out of CEIP metrics collection. If present and set to nonzero, the user opted out of CEIP metrics collection.

In the **Settings** dialog screen, the RealTime Connector adds a check box.

### **Send anonymous usage metrics to Citrix**

The check box is hidden if the administrator disables CEIP metrics collection by setting **DisableCEIPMetrics**. Otherwise, it appears. The check box is checked if the **OptOutOfCEIPMetrics** registry value is absent or set to zero. The check box is clear if **OptOutOfCEIPMetrics** is present and set to nonzero. When the user changes the state of the check box, the RealTime Connector updates the registry setting and enables or disables CEIP metrics submission accordingly.

## **Download**

November 7, 2018

Citrix recommends that you install this version of the RealTime Optimization Pack.

- Upgrading from version 1.8 to this version:  
You must install the RealTime Connector as a new installation - uninstall 1.8 version of the RealTime Connector before installing this version. You can install or upgrade RealTime Media Engine.
- Upgrading from an earlier 2.x version to this version:  
You do not need to uninstall the earlier version and can upgrade the RealTime Connector and the RealTime Media Engine to this version.

Download this version by logging on using your My Account credentials and going to the following download page:

<https://www.citrix.com/downloads/citrix-virtual-apps-and-desktops/components/hdx-realtime-optimization-pack-26.html>

After downloading, unzip the package and place the following installation files on an available network drive or a local device, such as a USB flash drive.

### **For Windows:**

The package includes the RealTime Connector for the Citrix Virtual Apps or Citrix Virtual Desktops server, and the Windows version of the RealTime Media Engine for user devices.

- HDX\_RealTime\_Media\_Engine\_2.6\_for\_Windows.msi - client running the Citrix Workspace app for Windows
- HDX\_RealTime\_Connector\_2.6\_for\_Skype\_for\_Business - server-side (and virtual desktop) - choose the 32-bit or 64-bit version to match your operating system. The Skype for Business client bitness doesn't matter.

For more information, see [Deploy the RealTime Media Engine to Windows devices](#).

### **For Linux:**

- HDX\_RealTime\_Media\_Engine\_2.6\_for\_Linux.zip
- HDX\_RealTime\_Media\_Engine\_2.6\_for\_Linux\_x64.zip

For more information, see [Deploy the RealTime Media Engine to Linux terminal devices](#).

For the Citrix Ready workspace hub, follow the download and installation instructions provided by your device vendor, NComputing or ViewSonic.

### **For Mac:**

- HDX\_RealTime\_Media\_Engine\_2.6\_for\_OSX.dmg

For more information, see [Deploy the RealTime Media Engine to Mac devices](#).

Now you can make the Optimization Pack available to your users. Before installing the RealTime Media Engine or the RealTime Connector, be sure that your environment meets the minimum software hardware and software requirements.

### **Chrome OS:**

Download the RealTime Media Engine for Chrome OS for use with the Citrix Workspace app 1809 for Android from Google Play at:

- <https://play.google.com/store/details?id=com.citrix.rtmeservice>

## **Install the RealTime Optimization Pack**

September 12, 2018

If you have not downloaded the installation files for the Optimization Pack, see [How to download the RealTime Optimization Pack](#).

The order of the Optimization Pack new installation (not an upgrade) is important:

1. If Citrix Workspace app is running, close it.
2. Install the RealTime Media Engine on your user devices.
3. Start Citrix Virtual Desktops.
4. Install the RealTime Connector on your Citrix Virtual Desktops virtual desktops and Citrix Virtual Apps servers.

#### **Important**

- Configure any anti-virus/security software on Citrix Virtual Apps and Desktops to allow the Optimization Pack and Skype for Business client to run without unnecessary performance degradation.
- RealTime Connector versions 2.x cannot be used with the RealTime Media Engine version 1.8. You can use any combination of the RealTime Connector versions 2.3 or later and this version of the RealTime Media Engine.

## **Deploy the RealTime Media Engine to your users**

You install RealTime Media Engine on client devices. The media engine provides local media processing of audio/video calls and peer-to-peer communication with other callers using Microsoft Skype for Business.

Your method for deploying RealTime Media Engine to a user device depends on the operating system of the device.

Download the RealTime Media Engine files from [HDX RealTime Media Engine for Microsoft Skype® for Business](#).

#### **Important**

If you plan to deploy the RealTime Media Engine for use with the Chrome OS, install the RealTime Media Engine for Chrome OS and the Citrix Workspace app for Android from Google Play:

[RealTime Media Engine for Chrome OS](#)  
and [Citrix Workspace app](#) using an Android device.

## **Deploy the RealTime Media Engine to Windows devices**

RealTime Connector requires the installation of the RealTime Media Engine on the host terminal device. This topic describes the steps for deploying the RealTime Media Engine to thin client terminals running Windows operating systems.

Prerequisites

### **Prerequisites:**

Before deploying the RealTime Media Engine to a Windows client device:

- Ensure that the Citrix Workspace app for Windows is installed on the user device and is able to connect through Citrix Virtual Desktops or to Citrix Virtual Apps.
- If the device is using RAM disk, increase it to its maximum size.

### **To maximize RAM disk space:**

1. Log on to the device.
  - If there is a red ball (labeled FBWF) in the Windows notification area, skip to the next step. The write filter is disabled.
  - If there is a green ball in the Windows notification area, click the green ball and choose DISABLE so that the ball turns red.
2. Restart your device and log on.
3. Open **Control Panel > Ramdisk**.
4. In the Ram disk Configuration dialog box, increase the size of the RAM disk to the maximum amount.
5. Restart your device.

### **Deploy the RealTime Media Engine:**

Ensure system requirements and prerequisites are met. You can then deploy the media engine to your users by making the installer available from a flash drive, webpage, or network drive.

1. Log on to the terminal or computer.
2. Run **HDX\_RealTime\_Media\_Engine\_2.6\_for\_Windows.msi**. After accepting the terms of use, the installer runs silently.
3. Install a web camera on the device, using the built-in Windows drivers.

## **Deploy the RealTime Media Engine to Mac devices**

The RealTime Connector requires the installation of the RealTime Media Engine on the client device. This section describes how to install the RealTime Media Engine on supported Mac OS devices.

Before running the RealTime Media Engine installation script, ensure that you have Citrix Workspace app 1808 for Mac or Citrix Receiver for Mac 12.0 or later installed on the device.

The installation package for the RealTime Media Engine includes the following components:

- Install HDXRealTimeMediaEngine.pkg
- Uninstall the HDXRealTimeMediaEngine

1. Log on to the Mac as an administrator.
2. Double-click the downloaded file, **HDX\_RealTime\_Media\_Engine\_2.6\_for\_OSX.dmg**. The disk image mounts.

3. To start the installation, double-click **HDX\_RealTime\_Media\_Engine\_2.6\_for\_OSX.dmg**.
4. Follow the instructions provided by the script.
5. After the installation completes, confirm the installation: In the Mac System Preferences under **Other**, select **Citrix HDX RealTime Media Engine** to view the installed version.
6. If you have Microsoft Skype for Business running as a published application, restart it (Microsoft Skype for Business).

## Deploy RealTime Media Engine to Linux terminal devices

The Optimization Pack requires the installation of the RealTime Media Engine on the terminal device. This section describes how to install the RealTime Media Engine for all supported platforms.

### Important

For the Citrix Ready workspace hub (formerly known as HDX Ready Pi), follow the download and installation instructions provided by your device vendor, NComputing, or ViewSonic.

### Prerequisites:

Before deploying the RealTime Media Engine to a Linux terminal device, you must install the Citrix Workspace app for Linux. Go to the download page for [Citrix Workspace app for Linux](#) and follow the instructions on that page for the system you are installing on.

- RealTime Media Engine 64-bit requires Citrix Workspace app 1808 for Linux or Citrix Receiver for Linux 13.2 x64 or greater
- RealTime Media Engine 32-bit requires Citrix Workspace app 1808 for Linux or Citrix Receiver for Linux 13.0 x86 or greater

### To run the RealTime Media Engine installation script:

The installation package for the RealTime Media Engine includes the following components. Use this package for Ubuntu, and Red Hat. The software detects the type of Linux and installs the appropriate package.

Components for the 32-bit package:

- EULA.rtf
- HDXRTME\_install.sh
- /i386 subdirectory containing the Debian and RPM packages:
  - citrix-hdx-realtime-media-engine-2.6.0-XXX\_i386.deb
  - citrix-hdx-realtime-media-engine-2.6.0-XXX\_i386.rpm

Components for the 64-bit package:

- EULA.rtf
- HDXRTME\_install.sh

- /x86\_64 subdirectory containing the Debian and RPM packages:
    - citrix-hdx-realtime-media-engine-2.6.0-XXX\_amd64.deb
    - citrix-hdx-realtime-media-engine-2.6.0-XXX\_x86\_64.rpm
1. Place the entire installation package in the directory from which you are running commands.
  2. Use **chmod** to make **./HDXRTME\_install.sh** executable.
  3. At the prompt of the directory in which the software resides, type **./HDXRTME\_install.sh**, and then follow the instructions provided by the script.
  4. If you have Microsoft Skype for Business running as a published application, restart it (Microsoft Skype for Business).

### **Upgrade the existing RealTime Media Engine installation:**

Use the same **./HDXRTME\_install.sh** script for upgrading the previous version of the RealTime Media Engine package.

### **Install the RealTime Connector on your servers and VDAs**

The RealTime Connector enables optimized audio and video conferences. To make the RealTime Connector available to your users in Citrix Virtual Apps and Desktops environments, you install the RealTime Connector on your Citrix Virtual Apps servers and Citrix Virtual Desktops virtual desktops.

#### **Important**

Before deploying the RealTime Connector on your servers and VDAs, ensure that you have Skype for Business installed.

### **Install in to a Citrix Virtual Desktops environment**

Install the RealTime Connector onto a Citrix Virtual Desktops virtual desktop you want to make available to your users. Before installation, ensure that Microsoft Skype for Business is not running on the Citrix Virtual Desktops virtual desktop.

#### **Important**

Uninstall older versions of the RealTime Connector before installing this version.

Depending on your VDA/Server operating system, use the 32-bit or 64-bit version of the RealTime Connector.

To install the RealTime Connector:

1. Start a Citrix Virtual Desktops virtual desktop and log on as administrator.
2. On the virtual desktop, run the installation file **HDX\_RealTime\_Connector\_2.6\_for\_Skype\_For\_Business.msi**  
**or**  
**HDX\_RealTime\_Connector\_2.6\_for\_Skype\_For\_Business\_32.msi** and follow the instructions.

## Install into a Citrix Virtual Apps environment

Install the RealTime Connector on each server in a Citrix Virtual Apps site where you want to make RealTime Connector available. Before installation, ensure that the Microsoft Skype for Business is not running in any sessions on the servers.

### Important

Uninstall older versions of the RealTime Connector before installing this version.

1. Log on to a Citrix Virtual Apps server as administrator.
2. Run the installation file HDX\_RealTime\_Connector\_2.6\_for\_Skype\_For\_Business.msi **or** HDX\_RealTime\_Connector\_2.6\_for\_Skype\_For\_Business\_32.msi and follow the instructions.

## Exclude lync.exe from antivirus software scanning

Your antivirus and anti-malware software might cause sound issues. To avoid issues like those issues in the following list, update your antivirus and anti-malware software, including network-offloaded antivirus scanners, to exclude scanning of Lync.exe.

- Call arrives and the ring tone plays incorrectly and has interruptions at irregular intervals.
- Dual Tone Multiple Frequencies (DTMF) playback is erratic making it difficult to tell which digit was typed.
- Discontinuous (“stutter”) ringing and Ringback tones.

## Disable the Optimization Pack

### Warning

Editing the registry incorrectly can cause serious problems that might require you to reinstall your operating system. Citrix cannot guarantee that problems resulting from the incorrect use of the Registry Editor can be solved. Use the Registry Editor at your own risk. Be sure to back up the registry before you edit it.

To disable and then reenble the Optimization Pack, do the following:

Back up and remove or rename the following registry keys (for example, VdiMediaProviderDisabled). When you restart Skype for Business, the Optimization Pack is disabled.

To reenble the Optimization Pack, restore or rename the key back to VdiMediaProvider.

For 64-bit Skype for Business or 32-bit Skype for Business on 32-bit Windows: HKEY\_LOCAL\_MACHINE\SOFTWARE\

For 32-bit Skype for Business on 64-bit Windows: HKEY\_LOCAL\_MACHINE\SOFTWARE\Wow6432Node\Microsoft\O



## Upgrade

August 28, 2018

For access to this version of the RealTime Optimization Pack features, upgrade your Skype for Business 2015 to the June 2016 PU (15.0.4833.1001) or subsequent PU or your Optimization Pack 1.x to this version.

### Optimization Pack 2.x to this version

Optimization Pack supports flexible upgrade from earlier 2.x Optimization Pack versions to this version. To upgrade from previous Optimization Pack 2.x versions to this version, be aware of the following considerations:

- To upgrade the Optimization Pack to this version, upgrade Skype for Business 2015 to minimum Product Update 15.0.4833.1001 or Skype for Business 2016 to minimum Product Update 16.0.7341.2032 (for Click-to-Run).
- You can upgrade the RealTime Connector from a previous 2.x to this version without immediately upgrading the RealTime Media Engine 2.x on the endpoints. You must update the RealTime Media Engine eventually to receive all the new features and fixes to known issues. This information applies to major, minor, and patch releases.
- You can upgrade the RealTime Connector and Skype for Business independently:
  - Upgrade the previous RealTime Connector 2.x to this version, and then upgrade Skype for Business 2015 to at least June 2016 Product Update 15.0.4833.1001. For Skype for Business 2016, you must upgrade to minimum Product Update 16.0.7341.2032.
  - OR
  - Upgrade Skype for Business 2015 to the June 2016 Product Update or subsequent Product Update. Then upgrade the RealTime Connector 2.0.x or 2.1 to this version. For Skype for Business 2016, you must upgrade to minimum Product Update 16.0.7341.2032.
- When doing a staged upgrade for a minor or major release (for example, from 2.0 to this version), upgrade RealTime Connector first, before RealTime Media Engine. Otherwise, you get fallback behavior rather than optimized behavior.
- Upgrades to a patch release (for example, 2.x to 2.x.100) can be done in either order.

#### Important

If you are upgrading from 1.x, you must upgrade both RealTime Connector and RealTime Media Engine to retain optimized operation.

## **Upgrade requirement for Linux**

If you are running the 32-bit Citrix Workspace app for Linux and 32-bit RealTime Media Engine on 64-bit systems, you can use the 32-bit RealTime Media Engine package to upgrade.

If you want a 64-bit RealTime Media Engine, first uninstall both 32-bit Citrix Workspace app for Linux and 32-bit RealTime Media Engine. Then install the 64-bit Citrix Workspace app for Linux 1808 or Citrix Receiver for Linux, version 13.2 or later and the 64-bit RealTime Media Engine

## **Optimization Pack 1.x to 2.x**

During 2015, Citrix and Microsoft co-developed a new architecture for delivering Skype for Business in virtualized environments. This new architecture provides smooth upgrades from one 2.x release to the next. It does so by allowing customers to upgrade the RealTime Connector on the XenApp and XenDesktop servers before upgrading the RealTime Media Engine on all user devices. Upgrading from the original 1.x to 2.x is more challenging because 1.x versions of the RealTime Media Engine aren't compatible with the RealTime Connector 2.x. Therefore, during the time between upgrading the RealTime Connector and upgrading the RealTime Media Engine on user devices, optimized delivery of the Skype for Business client isn't possible.

For the smoothest possible upgrade, we recommend using Electronic Software Delivery mechanisms to update the RealTime Connector and the RealTime Media Engine on user devices. Execute the upgrades as close to simultaneously as possible. To manage server load if some users require Skype for Business audio-video services while a major version mismatch exists between RealTime Connector and RealTime Media Engine, the RealTime Connector provides fallback controls. These controls enable administrators to configure whether to deny audio-video service totally until the RealTime Media Engine is upgraded to 2.x, permit only audio, or permit both audio and video. Server-side video processing has the greatest impact on CPU usage and server scalability.

## **Microsoft Lync VDI plug-in migration to Optimization Pack**

Citrix and Microsoft collaborated on a "version 2" architecture for delivering the Skype for Business client from Citrix Virtual Apps and Desktops. This collaboration culminated in the RealTime Optimization Pack 2.0 release in December 2015 and a corresponding update to the Skype for Business client. Previously, Microsoft promoted a "version 1" solution consisting of a Citrix Receiver for Windows plug-in called the VDI plug-in.

The Lync 2013 client version 15.0.4859.1002 (released in September 2016) includes an enhancement to support co-residency of the Lync VDI plug-in with the RealTime Media Engine 2.2. This enhancement assists migration. The migration procedure:

1. Apply all the latest updates for the Lync/Skype for Business client on the Citrix Virtual Desktops server and for the Lync VDI plug-in on the users Windows devices. Migration support is available only with the latest updates for both components. Ensure that the client is running in Skype for Business UI mode. This version of the Optimization Pack supports only this mode.
2. Deploy this version of the RealTime Media Engine on the endpoints in parallel with the Lync VDI plug-in. At this point, the Lync VDI plug-in is still used for audio/video calls.
3. Deploy the RealTime Connector for Skype for Business on the Citrix Virtual Desktops server. At this point, the system switches to using the Optimization Pack for audio/video calls.
4. Uninstall the Lync VDI plug-in from the Windows devices.

## Configure features

July 23, 2018

### Warning

Editing the registry incorrectly can cause serious problems that might require you to reinstall your operating system. Citrix cannot guarantee that problems resulting from the incorrect use of Registry Editor can be solved. Use Registry Editor at your own risk. Be sure to back up the registry before you edit it.

## RealTime Connector features

You can enable or disable fallback mode and the system notification balloons by changing registry settings in HKEY\_LOCAL\_MACHINE\Software\Citrix\HDXRTConnector or

HKEY\_CURRENT\_USER\Software\Citrix\HDXRTConnector.

### Fallback mode:

Control fallback mode by changing the following registry setting:

Key: HKEY\_LOCAL\_MACHINE\Software\Citrix\HDXRTConnector

or

HKEY\_CURRENT\_USER\Software\Citrix\HDXRTConnector

Name: DisableFallback

Value: DWORD

0 or missing value - fallback mode enabled

1 - fallback mode disabled

2 - video in the fallback mode disabled

**Notification balloons:**

Enable or disable the system notification balloons by changing the following registry setting:

Key: HKEY\_LOCAL\_MACHINE\Software\Citrix\HDXRTConnector

or

HKEY\_CURRENT\_USER\Software\Citrix\HDXRTConnector

Name: DisableStatusBalloons

Value: DWORD

0 or missing value - all status balloons enabled

1 - Connected balloon disabled. Fallback and Disconnected balloons enabled.

2 - all status notification balloons disabled.

**Disable or enable version mismatch warning:**

Enable or disable the version mismatch warning by changing the following registry setting:

Key: HKEY\_LOCAL\_MACHINE\Software\Citrix\HDXRTConnector

or

HKEY\_CURRENT\_USER\Software\Citrix\HDXRTConnector

Name: DisableVersionWarning

Value: DWORD

0 or missing value - Warning icon and text are enabled

1 - Warning icon and text are disabled in both the status notification icon and the About dialog.

**Windows Management Instrumentation (WMI) support:**

WMI support provides connection, call, and device status for all Optimization Pack connections.

The following are the namespace and classes. There is an example PowerShell script at **C:\Program Files (x86)\Citrix\HDX RealTime Connector\wmirtc.ps1** for retrieving all object data.

**Namespace:**

ROOT\Citrix\hdx\RTOptPack

**Classes:**

Citrix\_HDXRTConnector

Citrix\_HDXRTConnector\_Call

Citrix\_HDXRTConnector\_Device

**WMI calls:**

Run these calls from an account that has administrative privileges.

```
get-wmiobject -namespace root\citrix\hdx\RTOptPack -class Citrix_HDXRTConnector_Call
```

```
get-wmiobject -namespace root\citrix\hdx\RTOptPack -class Citrix_HDXRTConnector_Device
```

```
get-wmiobject -namespace root\citrix\hdx\RTOptPack -class Citrix_HDXRTConnector
```

Or use this example PowerShell script:

Example PowerShell script at C:\Program Files (x86)\Citrix\HDX RealTime Connector\wmirtc.ps1:

Syntax:

**wmirtc.ps1** [*Skype for Business Login name*]

- If no name is supplied, it returns objects for all classes for all users.
- If a name is supplied, it returns objects only for that user.

## **RealTime Connector and RealTime Media Engine features**

### **Disable logging:**

Logging is enabled by default. You can disable server-side and client-side logging by using these registry keys.

#### **RealTime Connector logging:**

Key: HKEY\_CURRENT\_USER\Software\Citrix\HDXRTConnector

Name: DisableFileLogging

Value: DWORD

Data:

0 or no value - logging enabled

1 - logging disabled

#### **RealTime Media Engine logging:**

Key: HKEY\_CURRENT\_USER\Software\Citrix\HDXRTConnector\MediaEngine

Name: DisableFileLogging

Value: DWORD

Data:

0 or missing value - logging enabled

1 - the RealTime Media Engine doesn't write the logs to files, but sends logs to the RealTime Connector.

**RealTime Media Engine service logging:**

Key:

HKEY\_USERS\DEFAULT\Software\Citrix\HDXRTConnector

Name: DisableFileLogging

Value: DWORD

Data:

0 or no value - logging enabled

1 - logging disabled

## Configure firewalls

August 28, 2018

When using the RealTime Optimization Pack, the RealTime Media Engine runs on the user device. The RealTime Media Engine performs signaling and media transmission. There is an easy way to understand which ports are used by the RealTime Media Engine for supporting external users. Equate running the RealTime Media Engine with running the Microsoft Skype for Business client locally on the user device. The difference is Citrix Virtual Apps and Desktops host the UI and business logic layers. Understanding that the media engine is running on the remote endpoint clarifies the port requirements.

External users outside of the corporate firewall connect to the Skype for Business Edge Server or Lync Edge Server. The Edge Server is a component of Skype for Business or Lync Server infrastructure. Install it on a dual-homed server in the DMZ having connections to both the internet and to the intranet. For more information, see <https://support.citrix.com/article/CTX201116>, <https://technet.microsoft.com/en-us/library/mt346415.aspx>, and <https://technet.microsoft.com/EN-US/library/mt346416.aspx>.

To find the Lync Edge Server, the RealTime Media Engine follows the same procedures as the Skype for Business client. See “How Skype for Business Clients Locate Services” at <https://technet.microsoft.com/en-us/library/dn951397.aspx>.

Internal users inside the corporate firewall connect directly to the Lync Server that runs inside the firewall. They also communicate point-to-point among other Lync clients during calls. For internal firewalls, ensure that the proper ports are open to connect to the Lync Server and to transmit and receive media during calls. The port requirements are listed at: <https://technet.microsoft.com/EN-US/library/gg398833.aspx>.

## Troubleshoot the RealTime Optimization Pack

August 28, 2018

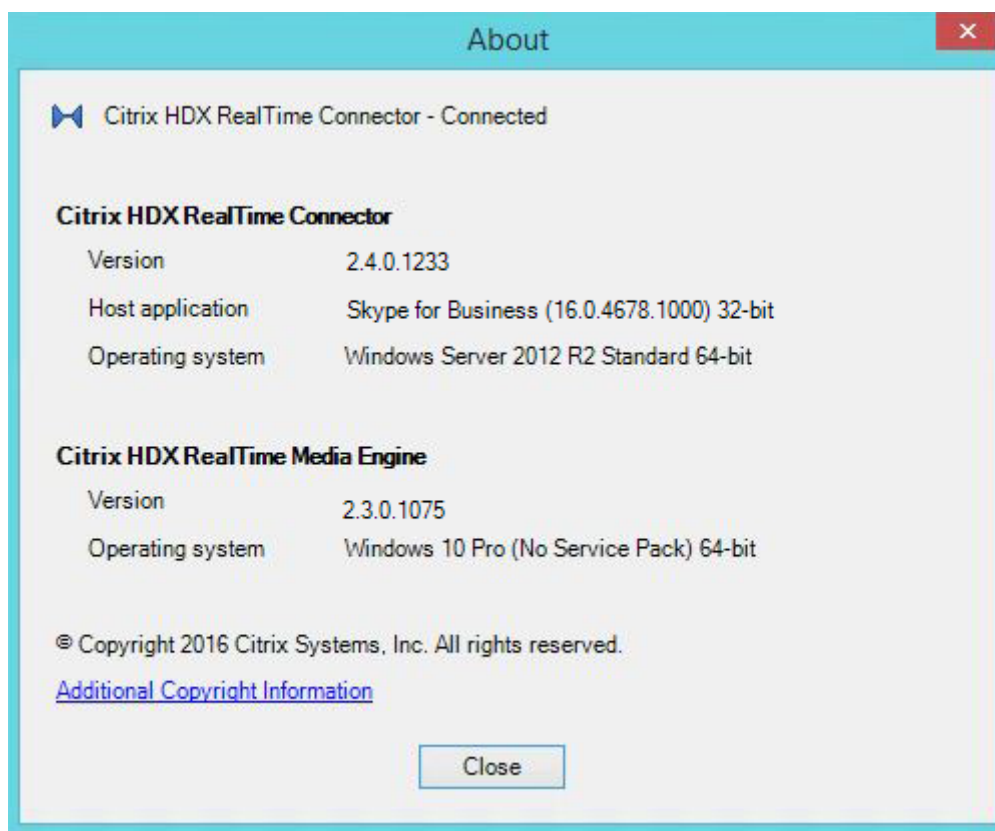
For more information about technical support on Microsoft Skype for Business on Citrix Virtual Apps and Desktops, see <https://support.citrix.com/article/CTX132979>.

### Warning

Editing the registry incorrectly can cause serious problems that might require you to reinstall your operating system. Citrix cannot guarantee that problems resulting from the incorrect use of the Registry Editor can be solved. Use the Registry Editor at your own risk. Be sure to back up the registry before you edit it.

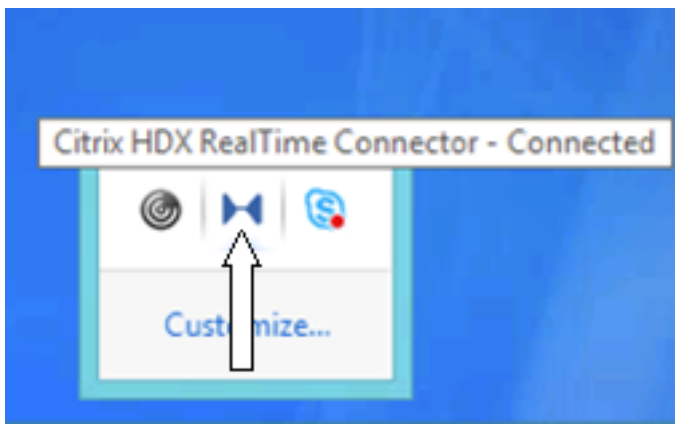
### Verify your installation and collect troubleshooting information

Open the **About** page and confirm the attributes (connection type, RealTime Connector and RealTime Media Engine versions, Skype for Business version, and operating system).

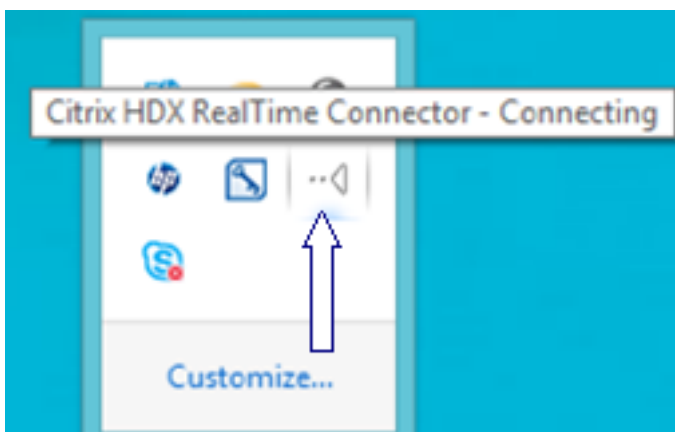


Open the Optimization Pack icon in the navigation area and confirm connection attributes. The following screenshots show the possible connection values.

**Connected** - There is a RealTime Connector connection over a virtual channel and the version of remote RealTime Media Engine matches the version of mediaEngine.Net.

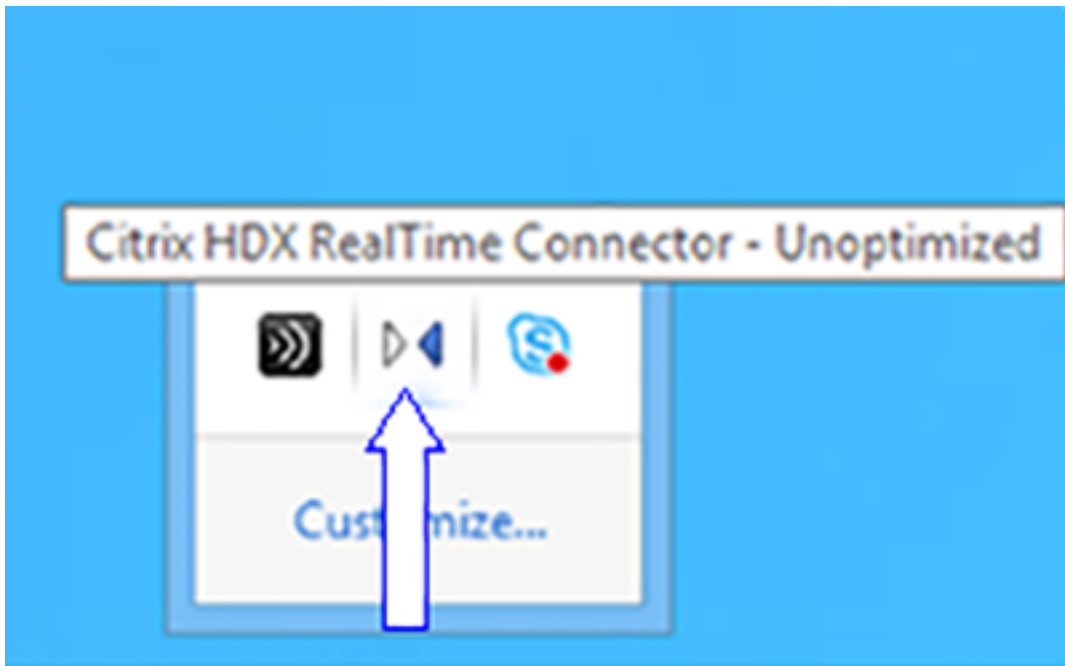


**Connecting** - MediaEngine.Net is trying to establish a RealTime Connector connection.



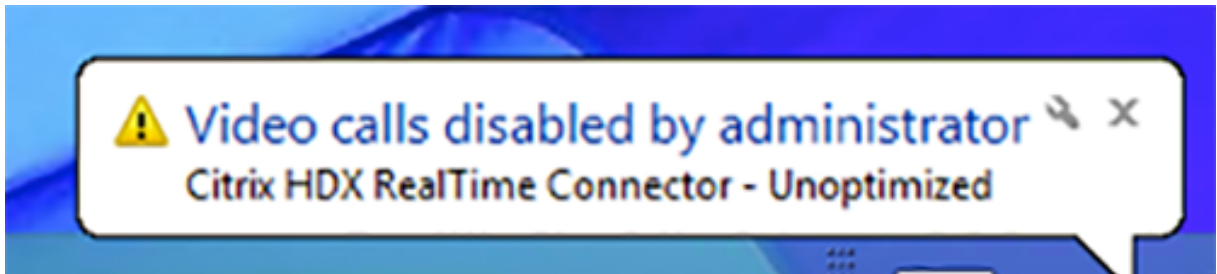
**Fallback or unoptimized mode** - There is a RealTime Connector connection to a local RealTime Media Engine process.



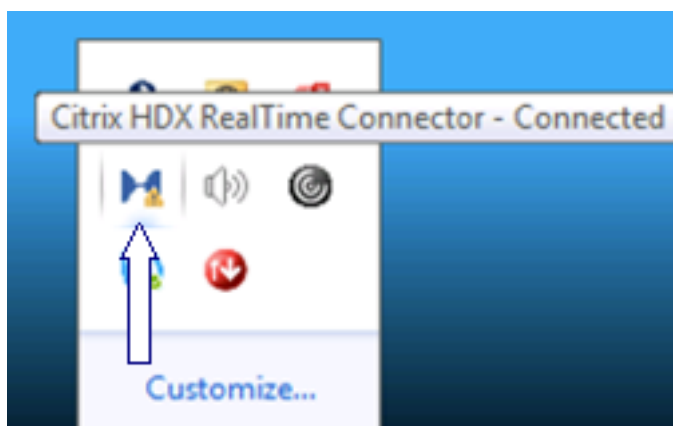


**Disable Fallback set to audio only**

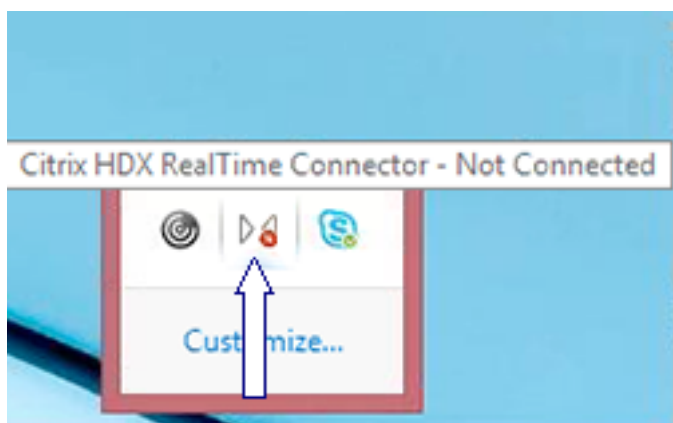
When DisableFallback is set to audio only, the icon displays this popup. For more information about controlling fallback mode, see [Fallback mode](#).



**Version mismatch** - Same as Connected but the version match is not exact (different major or minor numbers)



**Not connected** - A registry setting (policy) preventing MediaEngine.Net from running RealTime Media Engine locally.



You can verify your installation and collect troubleshooting information by right-clicking the Optimization icon and making selections from the menu.

- About - Specifies the version of the RealTime Connector and RealTime Media Engine
- Settings - Contains check boxes for **Automatically Adjust Microphone Level** (Automatic Gain Control (AGC)) and **Enable Echo Cancellation**, which are on by default. Disable these options only when users experience issues using either function.
- Call Statistics - During a call, you can view information about your network health by selecting **Call Statistics**. The Network Health window appears, as shown in the following example. To write the values to a text file whose default name is call\_statistics\_<date>.txt, select **Save Statistics**. Note: Other menu items are disabled when the Call Statistics window is open.
- Collect Logs - When you select **Collect Logs**, a **Save as** dialog box appears and you can save the log file. We offer a Log parser tool (LOPPER). The tool displays the following information:
  - Call details like caller, callee, call duration, and so forth.
  - Detail description of the call and any issues encountered.
  - Session Description Protocol (SDP) payload Flow among endpoints.
  - Call statistics.

- Any errors or warnings during the call.
- Session Description Protocol (SDP) messages.

For information about the Log Parser tool (LOPper), see <https://support.citrix.com/article/CTX214237>.

- Help - Takes you to the Skype for Business Help.

**Call statistics** - Displays audio and video statistics, including simulcast video information.

Call Statistics
✕

	Audio	Video	Total
Receive Packets Lost (%)	0.00	1.00	1.00
Receive Packets Lost	0	92	92
Sent Packets Lost (%)	0.00	0.00	0.00
Sent Packets Lost	0	0	0
Late Packets (%)	0.00	1.00	0.00
Dropped Packets (%)	0.00	1.21	1.00
Skipped Frames (%)	0.00	0.00	0.00
Jitter Buffer Size (ms)	0	5	
Average Data Sent (kb/s)	67	1366	1433
Average Data Received (kb/s)	62	209	271

	Sent	Received
Video Frame Rate		29.61
Video Resolution	<a href="#">Multiple</a>	640 x 360
Video Codec		H.264-UC (HW)
Audio Codec	G.722	G.722

Codec	Resolution	FPS	Bitrate	FEC Level	Viewers
H.264-UC (HW)	848 x 480	30.00	1000	0	1
H.264-UC (HW)	424 x 240	15.00	240	0	1
RT Video (SW)	320 x 180	15.00	170	1	3

Save Statistics

Close

## Resolve poor performance

If the performance and stability of the Optimization Pack are poor, a likely cause is interaction with an antivirus or security application. Resolve this issue by correctly configuring the antivirus or security application.

Correct configuration includes the following software exclusions:

- Optimization Pack process
- Log file location of Optimization Pack
- Log file location of the Skype for Business client
- Disable Network Directory Scan in the real-time settings (Scan files and folder in network shares and mapped network drive)

For information about sound issues, see [Sound issues and slow call establishment](#).

## Save crash logs for Dell Wyse terminals

On Dell Wyse terminals, the log file of an application crash is not saved when the user works in User mode. To save crash logs, the user must work in Administrator mode. You can find crash logs in MS-RAMDRIVE, which is drive Z by default on Wyse terminals.

## Resolve poor video quality

One of the following issues often causes poor video quality:

- When the user device is capable and sufficient bandwidth is available, the RealTime Media Engine can deliver high-definition (HD) video calls. Some devices can deliver only low-resolution video, unless using a webcam that offers H.264 hardware encoding.
- Inadequate CPU capabilities often cause poor quality video. Check your CPU performance by right-clicking the Optimization Pack icon and selecting **Call Statistics**.
- Out-of-date Windows 7 hardware and software can cause error messages during video rendering. Ensure that your hardware and software have the latest updates.
- Logitech RightLight technology can cause video problems because it lowers the frame rate produced by the camera. Edit the Logitech camera settings to ensure the RightLight check box is unselected so that the camera captures more frames per second.
- Wireless network connections might cause poor video quality. To ensure reliable transmission of video packets, if a wired connection is available, disable the wireless adapter and connect to a wired network.

Other options for improving video quality include:

- Improving lighting.

- Creating a darker background in the room from which the image is transmitted.
- Adjusting the anti-flicker setting of the transmitting camera.

For more information about factors impacting video quality with Skype for Business, see <https://support.citrix.com/article/CTX222553>.

### **Resolve poor quality or failed call connections on laptops running Windows**

Intel processors include SpeedStep technology, which lowers the clock speed of the processor when the machine runs on battery. Because desktop video applications require normal processor speeds to run, SpeedStep can cause poor visual and audio quality and failed call connections.

SpeedStep is enabled when the Windows power scheme is set to Portable/Laptop. To resolve poor call connections, change the power scheme to Home Office/Desk or Always On. Connecting the laptop to a regular power source is also recommended for call quality.

### **Determine whether your firewall is blocking the RealTime Connector**

If a personal firewall blocks the network initialization for too long, the RealTime Connector can fail to initialize. This condition resolves itself the next time the program is run after you unblock the application.

When the firewall is blocked, an error message such as the following can appear:

- RealTime Connector is waiting for the connection from the RealTime Media Engine.
- Failed to maintain RealTime Connector on this device. Communication to the RealTime Media Engine was disrupted. Contact your system administrator.

In such cases, create an exception in the Windows firewall.

### **Resolve video quality issues when using a wireless network connection**

If you experience issues with video quality when using a wireless network connection, try moving closer to the wireless access point. If that does not resolve the issue, try a wired network connection instead. When using a wired network connection, disable the wireless network adapter to avoid transmission issues.

### **Resolve installation issues**

For software in general, the most common installation problems are related to corrupt system files needed for installation. These errors are rare, but difficult to troubleshoot.

The RealTime Media Engine installer requires Microsoft .NET 4.0. If it is missing from the computer, install it to resolve the problem. If it is already installed, run a repair installation on .NET.

On some Windows machines, customers encounter errors during software installation when embedded custom-action VB scripts run. Common errors presented to the user or captured in install logs are 2738 and 1720. Some customers have encountered these errors when an antivirus program places the vbscript.dll Class ID under the HKEY\_CURRENT\_USER registry hive instead of under HKEY\_LOCAL\_MACHINE. The HKEY\_LOCAL\_MACHINE hive is where it is needed for the proper elevated run level.

Run the following registry queries to determine if the vbscript.dll Class ID is installed for the current user, system wide, or both:

- % reg query HKEY\_CURRENT\_USER\SOFTWARE\Classes\CLSID{B54F3741-5B07-11CF-A4B0-00AA004A55E8}
- % reg query HKEY\_LOCAL\_MACHINE\SOFTWARE\Classes\CLSID{B54F3741-5B07-11CF-A4B0-00AA004A55E8}

The Class ID appears only for HKEY\_LOCAL\_MACHINE. If it is under HKEY\_CURRENT\_USER, follow these steps. If Class ID is under HKEY\_LOCAL\_MACHINE and not HKEY\_CURRENT\_USER, start at step 2.

1. Run an antivirus clean-up utility:
  - a) If the terminal has an antivirus program installed and the vendor has a clean-up utility, run the clean-up utility.
  - b) Rerun the RealTime Media Engine installer MSI.
  - c) If the issue persists, go to the next step.

2. Register vbscript.dll:

The vbscript.dll file or registry reference to its Class ID can become unregistered or corrupted. Follow these steps to register or repair it.

- a) Run CMD.exe as an administrator: Click Start, type cmd, right-click cmd, and click **Run as administrator**.
  - b) Type in the Command window:
    - For the 32-bit version of Windows: **cd %windir%\system32**
    - For the 64-bit version of Windows: **cd %windir%\syswow64**
  - c) Type in the Command window: **regsvr32 vbscript.dll**
  - d) Rerun the RealTime Media Engine installer MSI.
  - e) If the issue persists, go to the next step.
3. Remove the vbscript.dll Class ID:
    - a) In the Registry Editor, locate and remove registry key HKEY\_Current\_User\SOFTWARE\Classes\CLSID{B54F3741-5B07-11CF-A4B0-00AA004A55E8}.

- b) Click **Start > Control Panel**, navigate to the User Account Control Settings, and then move the slider to **Never notify**.

After you complete the troubleshooting, you can revert this change if needed.

- c) Rerun the RealTime Media Engine installer MSI.
- d) If the issue persists, go to the next step.

4. Repair corrupt system files by using System File Checker:

- a) Run CMD.exe as an administrator: Click Start, type cmd, right-click cmd, and click **Run as administrator**.
- b) In the Command window, type: **sfc /scannow**
- c) Rerun the RealTime Media Engine installer MSI.
- d) If the issue persists, go to the next step.

5. Restore corrupt registry entries to their original state:

- a) Restart the Windows terminal and during the restart, insert the OS installation DVD to start from it.

The OS installation DVD must match the Windows service pack installed on the terminal.

- b) Follow the installation steps, selecting the option to repair the OS.
- c) Rerun the RealTime Media Engine installer MSI.

## Notification area icon displays an unoptimized fallback operation

An unoptimized session in fallback mode is when the RealTime Connector is not able to connect to the RealTime Media Engine, and audio and video processing occurs on the server. When the notification area icon indicates an unoptimized fallback session, try these troubleshooting tips:

- If the RealTime Media Engine isn't installed on the client device, install it.
- A version of the RealTime Media Engine that is newer than the RealTime Connector is installed on the user device. Reinstall the correct version of RealTime Media Engine or upgrade your RealTime Connector. You can use a combination of versions 2.x RealTime Connector and RealTime Media Engine. The RealTime Connector version must be newer than, or the same as, the RealTime Media Engine.
- The RealTime Media Engine might be failing to start. To obtain the logs, click the RealTime Optimization Pack icon and select **Logs**. If you can't determine the cause of the issue, contact Citrix Technical Support.

### **Notification area icon does not appear**

After you install the Optimization Pack on both the endpoint and server and start Skype for Business, the Optimization Pack icon appears in the notification area. If not, ensure that the Skype for Business version is Public Update (PU) 15.0.4779.1001 or later.

### **Notification balloons do not appear**

If the notification balloons do not appear, ensure that they were not disabled. You can enable or disable them. For more information, see [Notification balloons](#).

### **Sound issues and slow call establishment**

If calls take a long time to establish or established calls have sound issues, check your antivirus software and ensure **lync.exe** is excluded from scanning. For example:

- Call arrives and the ring tone plays incorrectly and there are interruptions at irregular intervals.
- Dual Tone Multiple Frequencies (DTMF) playback is erratic making it difficult to tell which digit was typed.
- Discontinuous (stutter) ringing and Ringback tones.

### **Windows Defender**

Sound issues might occur because of Windows Defender. We recommend that you do the following proactively for all for Windows 8.1 and Windows 10 VDAs:

1. Click **Start** and type **Defender**.
2. Choose the Windows Defender settings option.
3. Scroll down to Exclusions and choose **Add an exclusion**.
4. Choose Exclude a .exe, .com or .scr process.
5. Navigate to where Skype for Business is installed (C:\Program Files\Microsoft Office\Office15).
6. Choose Lync.exe and choose **Exclude this file**.

### **Skype for Business does not recognize the webcam**

If Skype for Business doesn't recognize the webcam of the user, edit the system registry and add DevicePath:

HKEY\_CLASSES\_ROOT\CLSID\{860BB310-5D01-11d0-BD3B-00A0C911CE86}\Instance\Citrix HDX Web Camera. (32-bit devices)



HKEY\_CLASSES\_ROOT\Wow6432Node\CLSID{860BB310-5D01-11d0-BD3B-00A0C911CE86}\Instance\Citrix  
HDX Web Camera (64-bit devices)

Name: DevicePath

Type: REG\_SZ

Value: Citrix Client

**Locations**

Corporate Headquarters | 851 Cypress Creek Road Fort Lauderdale, FL 33309, United States

Silicon Valley | 4988 Great America Parkway Santa Clara, CA 95054, United States

© 2018 Citrix Systems, Inc. All rights reserved. Citrix, the Citrix logo, and other marks appearing herein are property of Citrix Systems, Inc. and/or one or more of its subsidiaries, and may be registered with the U.S. Patent and Trademark Office and in other countries. All other marks are the property of their respective owner(s).