



# XenClient Enterprise Engine Windows Installer

Version 5.1.0

March 26, 2014

## Table of Contents

<b>About this Guide</b> .....	<b>3</b>
<b>About the XenClient Enterprise Engine Installer</b> .....	<b>3</b>
Important Considerations .....	3
<b>Using the XenClient Enterprise Engine Installer</b> .....	<b>4</b>
Installing Using the XenClient Enterprise Engine Wizard.....	4
Installing using a Command Line .....	13
<b>Installation Considerations</b> .....	<b>Error! Bookmark not defined.</b>

Copyright © 2014 Citrix All Rights Reserved.  
Version: 2.1  
Citrix, Inc.  
851 West Cypress Creek Road  
Fort Lauderdale, FL 33309  
United States of America

This document is furnished "AS IS." Citrix, Inc. disclaims all warranties regarding the contents of this document, including, but not limited to, implied warranties of merchantability and fitness for any particular purpose. This document may contain technical or other inaccuracies or typographical errors. Citrix, Inc. reserves the right to revise the information in this document at any time without notice. This document and the software described in this document constitute confidential information of Citrix, Inc. and its licensors, and are furnished under a license from Citrix, Inc.

Citrix Systems, Inc., the Citrix logo, Citrix XenClient, are trademarks of Citrix Systems, Inc. in the United States and other countries. All other products or services mentioned in this document are trademarks or registered trademarks of their respective companies. Citrix Systems, Inc. acknowledges all trademarks used in this document. Linux is a registered trademark of Linus Torvalds and Ubuntu is registered trademark of Canonical Ltd. Windows is a registered trademarks of Microsoft Corporation. All trademarks are the property of their respective owners.

## About this Guide

---

This document provides information about the XenClient Engine Windows Installer implementation. Use this installation method to install an Engine on a computer.

## About the Engine Windows Installer

---

The Engine Windows Installer allows you to set up a XenClient installation from a previously existing Windows System; this document focuses on procedures associated with a Windows 7 environment. This installer provides two options:

- a Wizard that automatically guides you through the installation process
- a command line that allows you to invoke commands to install the Engine



For additional Engine installation options, refer to the *XenClient Enterprise Engine Installation Guide*.

The Engine Windows Installer is divided into two stages:

- Stage one — An installation Wizard guides you through the preparation process to prepare your system for the Engine. Once completed, the system reboots and the second stage of the installer launches.
- Stage two — In this stage, the installer either performs all the work necessary to shrink the Windows partitions on the hard drive and install the Engine, or if you have chosen to remove Windows entirely, it wipes the disk and performs a full install from scratch.



The second stage of the installation is automated and cannot be stopped once started.

The following occurs when running the Engine Windows Installer:

- Windows — Installs various system files; if specified you can either set a HTTP URL path or download to a local PC and browse to the location to download and install the installation ISO. Once downloaded, the installer patches the Windows boot loader to run the Engine Windows Installer.
- Linux — Shrinks the NTFS partitions, creates XenClient Enterprise partitions, optionally creates a recovery partition, installs and configures the Engine, and installs the Engine boot menu.



To use the Engine Windows Installer, you will need the Microsoft Windows Installer and the latest Engine ISO; access the Citrix [website](#) for the latest version.

## Important Considerations

---

When using the Installer, consider the following important limitations:

- Running the Engine Windows Installer permanently alters your system disk; Windows partitions are shrunk to make room for the installation. To avoid possible data loss, be certain to **make a backup image of your entire hard drive before starting the Engine Installer**.
- There is currently no way to reclaim the disk space that the installer uses for Windows without manually repartitioning your disk.
- Do not perform this on a machine that you need to return to its original configuration unless you have backed up your image; a system image may be required.
- Be certain that you are running on A/C power while installing, and DO NOT shut the power off on your PC while running the Installer; this may lead to a corrupted system.
- Installation time varies, and depends on the size of the disk and how full the disk partition is; the entire process may take up to twenty minutes.
- Most hard disks have a limit of 4 physical partitions. To install an Engine, you must have at least one free partition available. To install the Engine with a *recovery* partition, you must have at least two free partitions available. Refer to the Windows Disk Manager to determine the number of disk partitions available.
- The Installer does not determine how much space to use; during installation, 90% of available disk space may be consumed by the installed Engine.



Ensure that your Windows drive has sufficient disk space. Approximately 90% of the NTFS partition will be used for the installation; the amount of free space on Windows will NOT match up exactly with the amount of space that the Installer can shrink.

## Using the Windows Engine Installer

---

There are two ways to launch the Installer:

- Using the Installer Wizard by clicking the installer executable file
- An advanced procedure using command line tools followed by various options

## Installing the Engine using the Wizard

---

To install the Engine using the Wizard:

1. Locate the Installer file; double click the file to launch the Wizard.

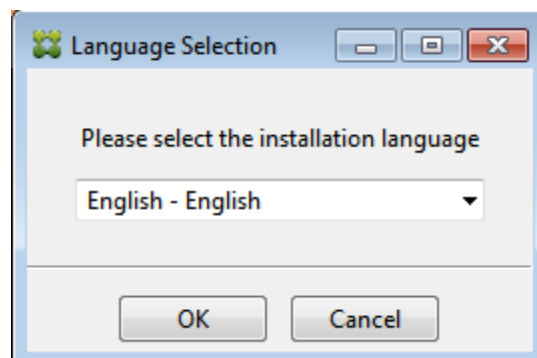


A user account control message appears: “Do you want to allow the following program to make changes to this computer?” Click Yes (or OK) to accept changes to your computer.

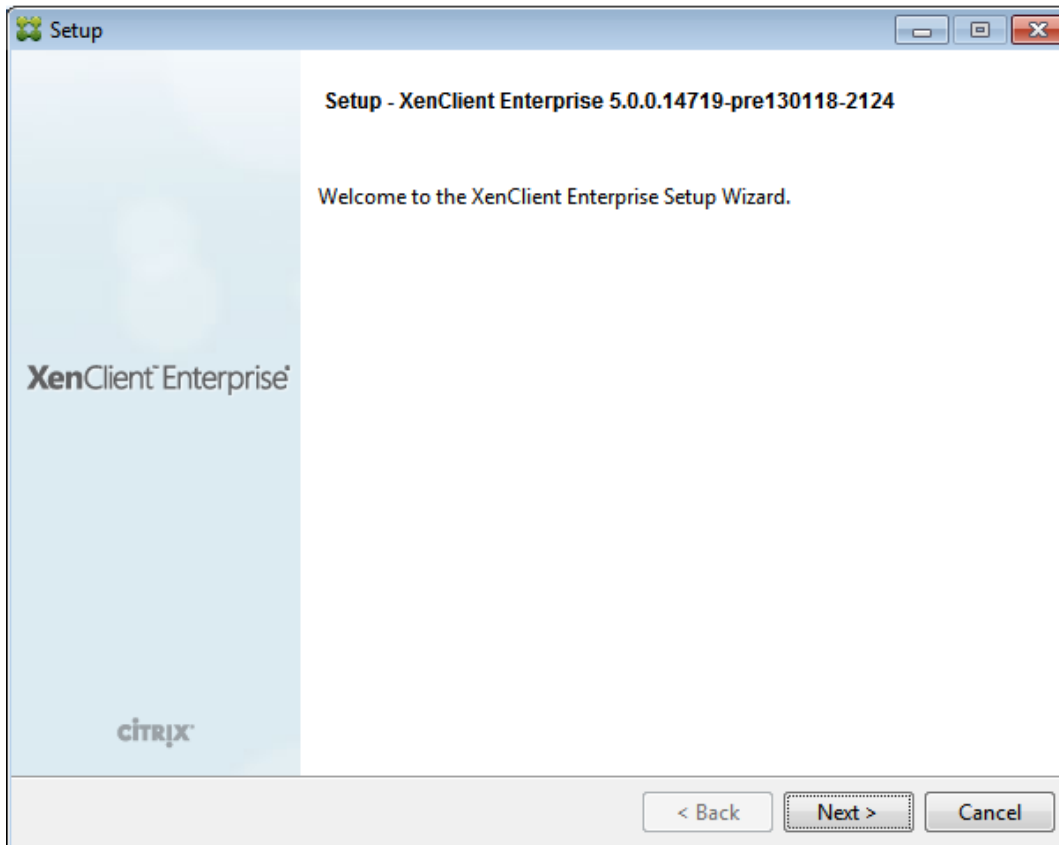
The Wizard splash screen appears:



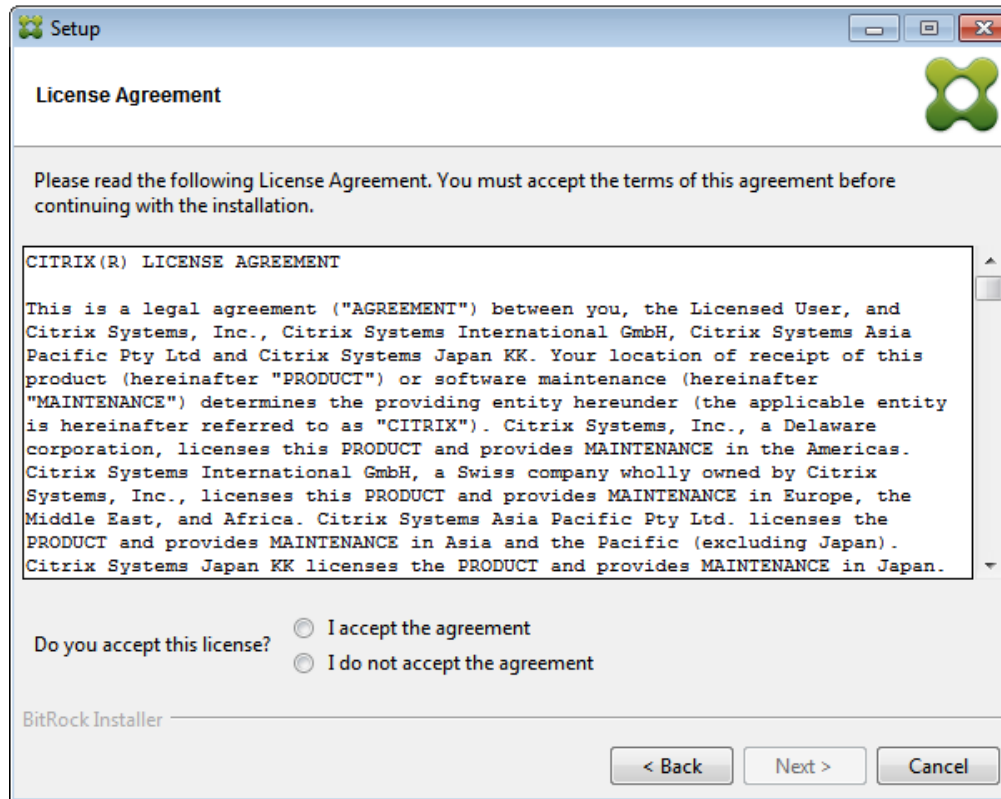
2. Select the appropriate installation language from the drop down menu; click OK:



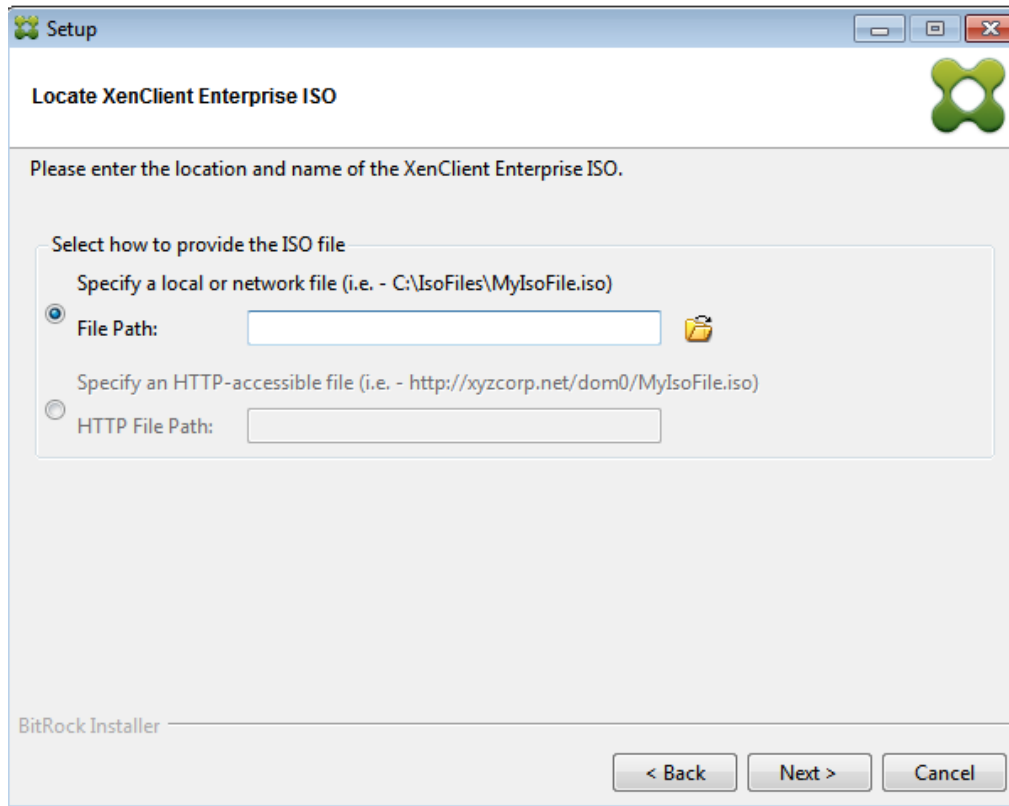
3. After selecting the appropriate language, the Welcome screen appears; click Next.




4. In the License Agreement screen, select the "I accept the agreement" radio button to accept the terms of the license; click Next.



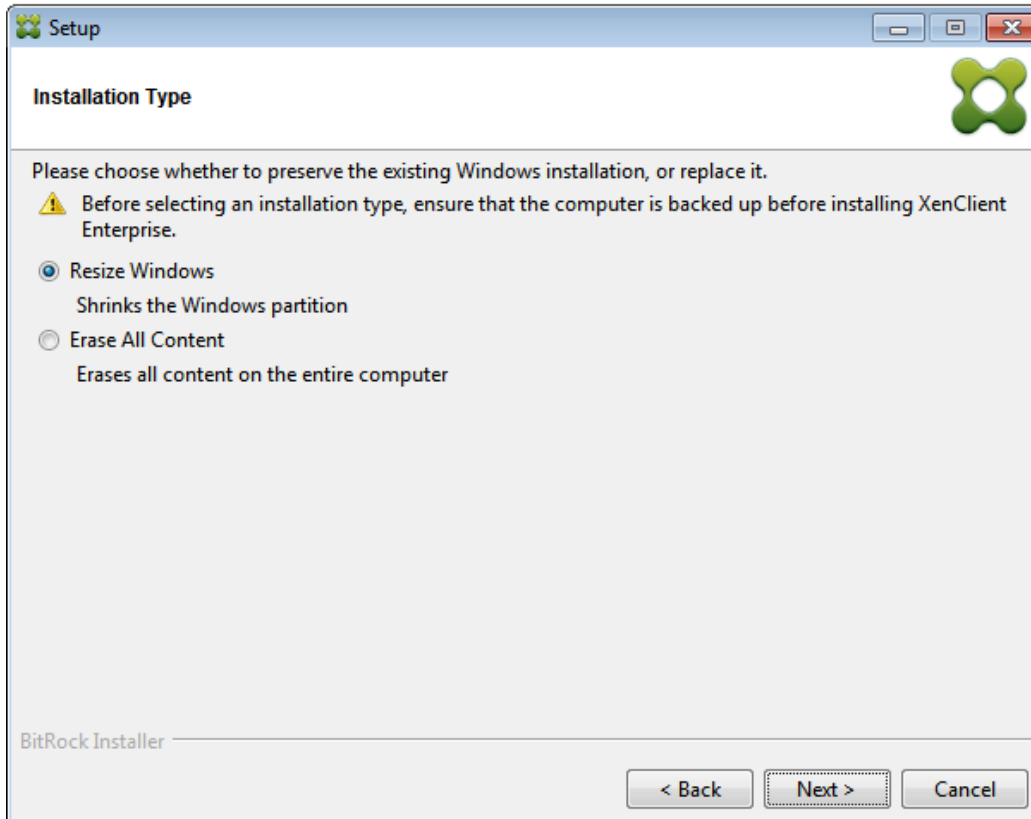
5. In the **Locate XenClient Enterprise ISO** screen, enter the location of the Installation ISO file; browse to a directory on the local computer using the File Path or specify a URL using the HTTP File Path:




 An MD5 checksum file is provided to confirm the integrity of the ISO file. When downloading the ISO file, make sure you also copy the checksum file and place it in the same local path (directory) of the ISO file. The checksum file is not required, however, if it is not installed the Wizard may display a warning message.

6. Click **Next**. The **Installation Type** screen appears:

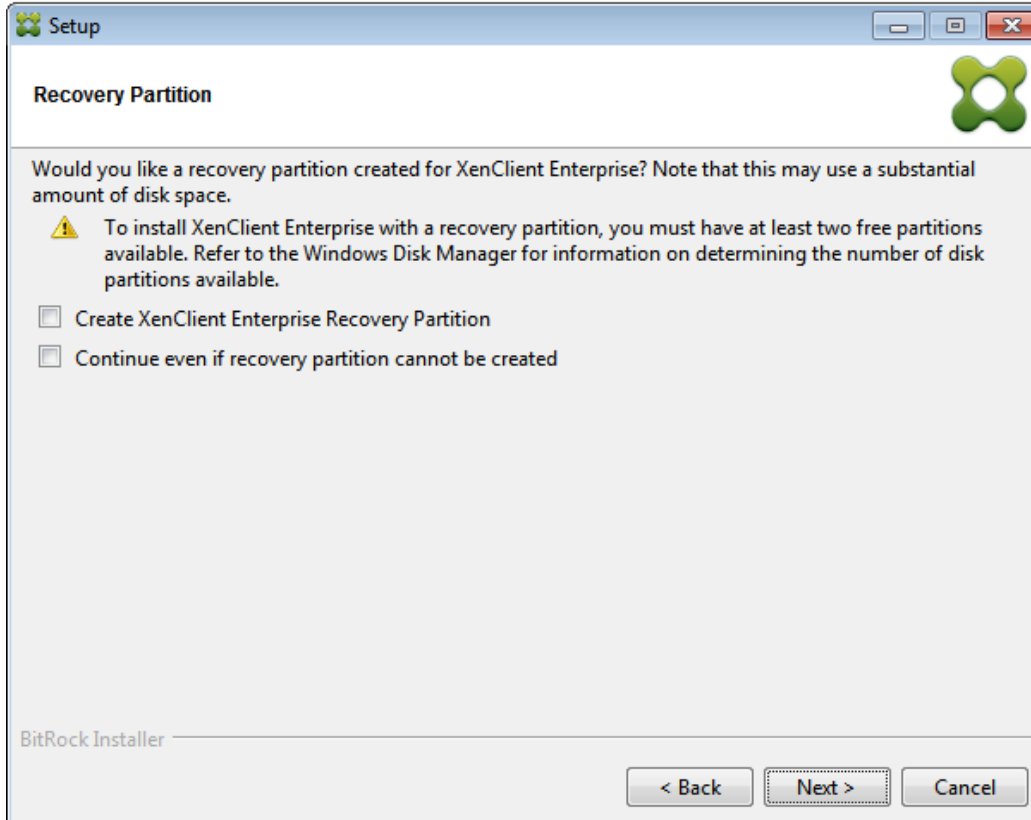





7. In the Installation Type screen, choose an appropriate type:
  - Resize Windows — Shrinks the Windows partition; the resulting size of the partition is approximately 10% of the current size.
  - Erase all Content — Erases all content on the entire hard drive.

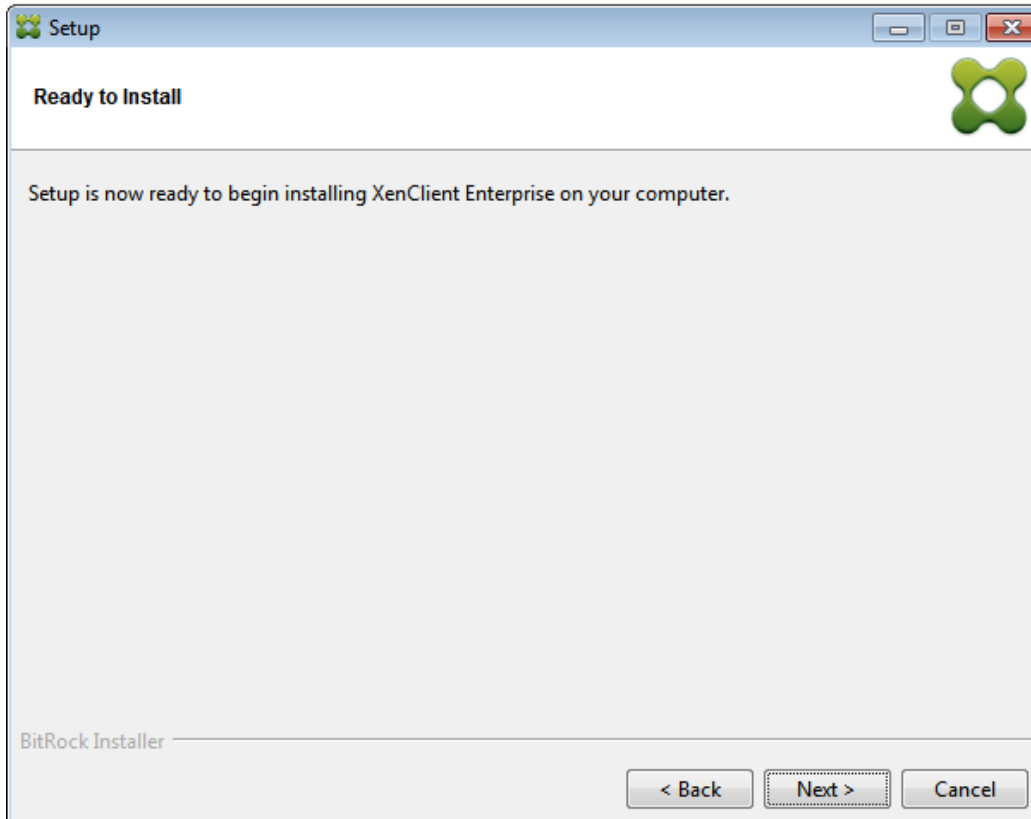
 Before selecting an installation type, ensure that the computer is backed up **before** installing the Engine.

8. Click **Next**. The **Recovery Partition** screen appears. A recovery partition is a separate area created on your disk where an exact copy of the Engine is placed. To create a partition, select the **Create XenClient Enterprise Recovery Partition** checkbox; alternately choose to continue with the installation even if a partition cannot be created.

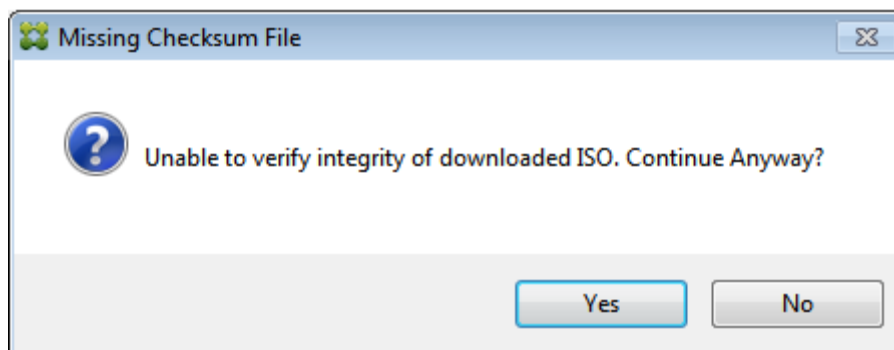



 The recovery partition requires approximately 2 GB of space. Your computer must have at least two free partitions available; if no free partition is available, the recovery partition cannot be created and the process will be aborted. Use the Windows Disk Manager for information about the number of available disk partitions.

9. Click **Next**. The **Ready to Install** screen appears:

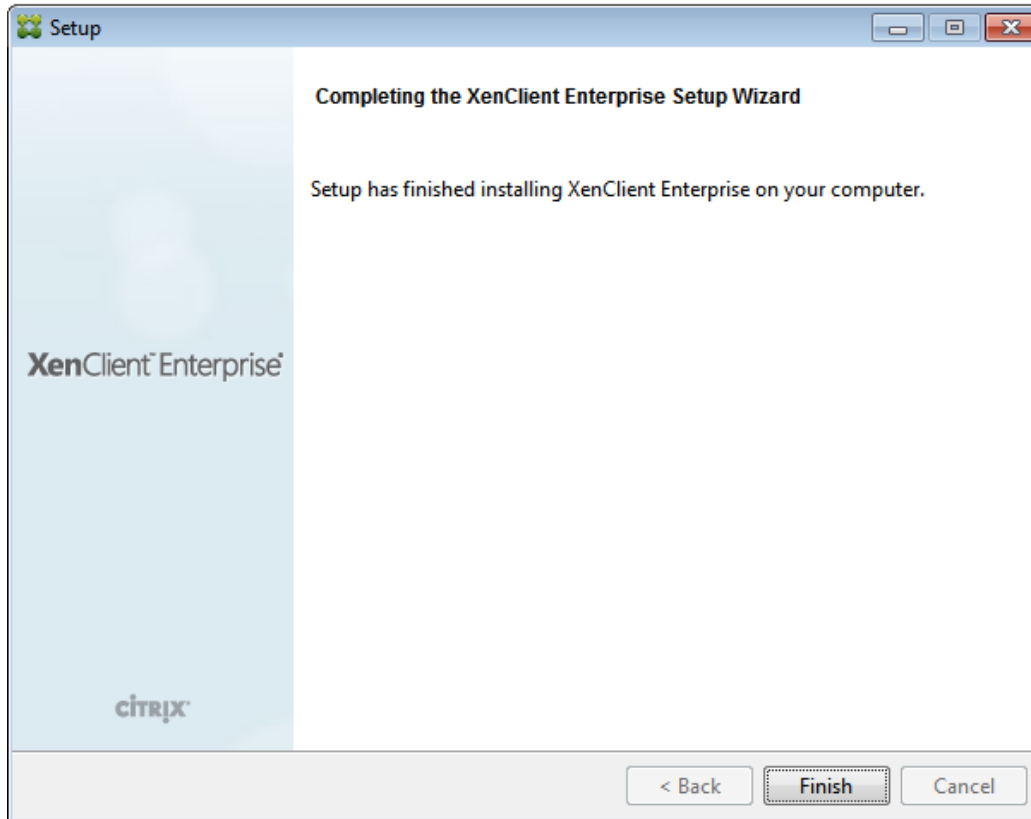


10. In the **Ready to Install** screen, click **Next** to start the installation. If a previous ISO image exists, a prompt appears to replace it:

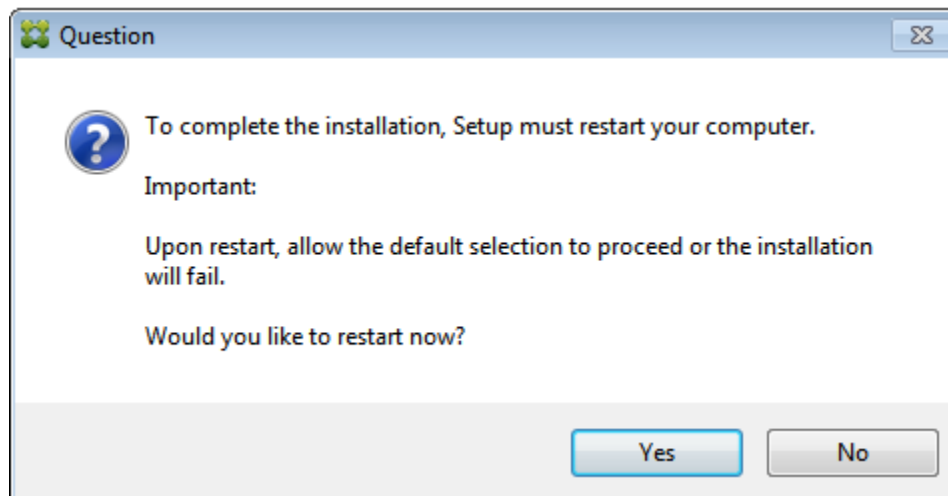


-  After clicking Yes, a warning message may appear if there is no MD5 hash file for the ISO.

Once the installation is complete, a confirmation screen appears:



11. Click **Finish** to complete the installation.
12. You must restart the computer to complete the installation.



## Installing using a Command Line

Use the following installation option to initiate the Installer from a command line:

**XenClientEnterpriseInstall[VERSION].exe**

The syntax for these commands is:

**XenClientEnterpriseInstall[VERSION].exe --<option><option>**

For example, to launch the installer and “Continue even if recovery partition cannot be created”, enter:

**XenClientEnterpriseInstall\_4.1.0.12834-pre12067-1457.exe --continue\_without\_partition true**



For unattended installations (where the **client.ini** and **dom0.iso** are put on the disk), use the following command string (these options are described in the table below):


```
--clientConfig c:\Citrix\boot\client.ini --isoChoice filePath --filePath
c:\ Citrix\boot\dom0.iso --mode unattended
```



For more information about the XenClient Enterprise autoconfig file (i.e., **client.ini**), refer to the *XenClient Engine Installation Guide*.

The table below illustrates options associated with the command line installer:

Option	Description	Default
--help	Display the list of valid options	
--version	Display product information	
--clientconfig <client config file>	Sets parameters in the installation option file; this file allows you to specify a large number of parameters (similar to a <code>.properties</code> file), for example, for <code>client.ini</code> : <pre>isoChoice=filePath filePath=C:\MyIsoFiles\MyIso.iso</pre> This file can be passed to the installer using the <code>--optionfile</code> command line flag, for example: <pre>C:\XenClientEnterpriseInstall_4.1.0 .12834.exe --clientconfig C:\Citrix\client.ini</pre>	
--noReboot 1	Prevent the installer from rebooting the PC after completing the installation.	
--debuglevel <0-4>	Debug information level of verbosity; specify 0-4. By default, this value is to <b>2</b> .	2
--mode <win32 unattended>	Installation mode used to indicate a silent/unattended install; includes the following options: <ul style="list-style-type: none"> <li>win32 (default value); indicates that the regular Windows installer is executed</li> </ul>	win32

	<ul style="list-style-type: none"> <li>unattended; indicates the installation mode.</li> </ul>	
--unattendedmodeui <none   minimal   minimalWithDialogs>	Unattended mode UI; includes the following options: <ul style="list-style-type: none"> <li>None – indicates that no progress bar will be shown when performing an unattended installation. By default, this value is set to <b>none</b>.</li> <li>Minimal – this value displays a graphical progress bar during an unattended installation.</li> <li>minimalWithDialogs – In this mode, pop-up messages will be displayed in addition to the progress bar of the minimal mode.</li> </ul> This command can be combined with the --mode switch to support a silent/unattended installation. For example: <pre>C:\ XenClientEnterpriseInstall_4.1.0.12834.exe --mode unattended C:\ XenClientEnterpriseInstall_4.1.0.12834.exe --mode unattended --unattendedmodeui minimal</pre>	none
--debugtrace <debugtrace>	Debug filename	
--isoChoice	Select how to provide the ISO file; options include: <ul style="list-style-type: none"> <li>filePath, httpPath</li> </ul> For example, to specify filePath: <pre>XenClientEnterpriseInstall_4.1.0.12834.exe --isoChoice filePath --filePath C:\MyIsoFiles\MyIso.iso</pre> For example, to specify httpPath: <pre>XenClientEnterpriseInstall_4.1.0.12834.exe --isoChoice httpPath --httpPath http://myserver/MyIsoFiles/MyIso.iso</pre>	
--filePath <filePath>	The file path to the ISO file on the local disk.	
--httpPath <httpPath>	The HTTP file path to the ISO file	
--create_recovery_partition <True False>	Create a XenClient Enterprise Recovery Partition	True
--continue_without_partition < True False >	Continue even if a recovery partition cannot be created.  This option is useful for large deployments where the installation can continue on those systems that have sufficient disk space and stop on those systems where the partition is not large enough to support the installation.	False



To display a list of command line installation options, execute the installer using the --help command, enter:

**XenClientEnterpriseInstall[VERSION].exe --help**