



# Licensing

## Contents

<b>Licensing 11.17.2 build 49000</b>	<b>2</b>
<b>Licensing 11.17.2 build 48000</b>	<b>3</b>
<b>Licensing 11.17.2 build 47000</b>	<b>5</b>
<b>Licensing 11.17.2 build 46000</b>	<b>7</b>
<b>Licensing 11.17.2 build 45000</b>	<b>9</b>
<b>Licensing 11.17.2 build 44000</b>	<b>11</b>
<b>Licensing 11.17.2 build 43000</b>	<b>13</b>
<b>Licensing 11.17.2 build 42000</b>	<b>15</b>
<b>Licensing 11.17.2 build 41000</b>	<b>17</b>
<b>Licensing 11.17.2 build 40000</b>	<b>19</b>
<b>Licensing 11.17.2 build 39000</b>	<b>21</b>
<b>Licensing 11.17.2 build 37000</b>	<b>23</b>
<b>Licensing 11.17.2 build 36000</b>	<b>26</b>
<b>Licensing 11.17.2 build 35000</b>	<b>29</b>
<b>Licensing 11.16.6</b>	<b>30</b>
<b>Licensing 11.16.3</b>	<b>31</b>
<b>Licensing 11.15</b>	<b>33</b>

## Licensing 11.17.2 build 49000

September 7, 2025

Citrix® licensing is a system of components that functions together. Before you use any of your Citrix products, learn about licensing components. The Citrix licensing system includes:

- License Server - Every Citrix product environment must have at least one shared or dedicated License Server. Servers running Citrix products contact the License Server to obtain licenses. For more information, see [License Server](#).
- License files - The license file is a text file containing the product licensing information. It includes License Server name, license expiration date, and other information. For more information, see [License files](#).
- Citrix Licensing Manager - The Citrix Licensing Manager is a web-based management console for Citrix Licensing. For more information, see [Citrix Licensing Manager](#).
- Licensing Services - The Citrix Licensing service is the Windows service responsible for the following core licensing functionality:
  - Citrix Web Services for Licensing
  - Citrix Licensing Support Service
  - Citrix Licensing WMI
  - CITRIX vendor daemon

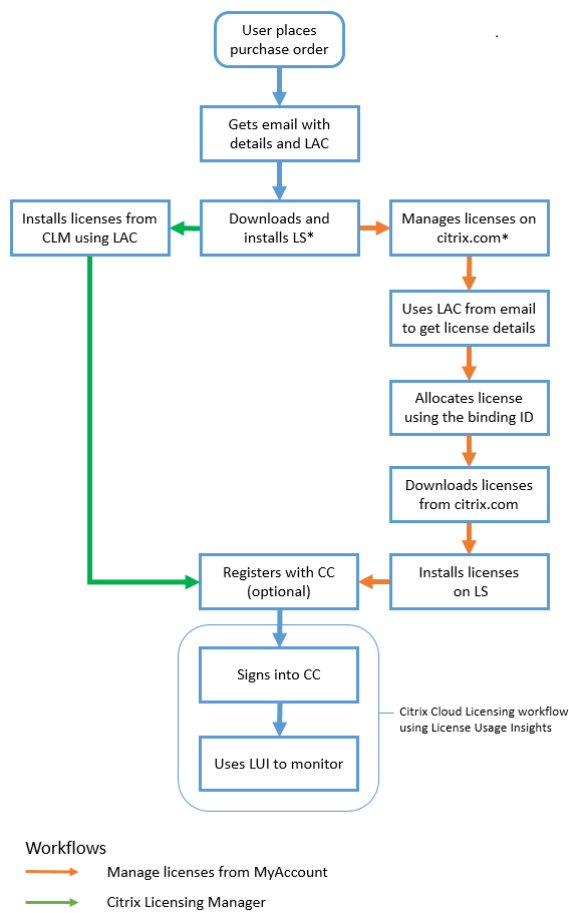
For more information, see [Licensing services](#).

- Product-side settings in your Citrix products that are associated with the License Server.

For more information about licensing components, see [Citrix licensing technical overview](#).

### Citrix licensing: User workflow

The following image describes the Citrix licensing workflow.



### Key

\*- Before downloading and installing the License Server, an existing user logs on to citrix.com, while a new user creates a citrix.com account.

CC - Citrix Cloud™

CLM - Citrix Licensing Manager

LAC - License Access Code

LS - License Server

LUI - License Usage Insights

## Licensing 11.17.2 build 48000

September 7, 2025

Citrix® licensing is a system of components that functions together. Before you use any of your Citrix products, learn about licensing components. The Citrix licensing system includes:

- License Server - Every Citrix product environment must have at least one shared or dedicated License Server. Servers running Citrix products contact the License Server to obtain licenses. For more information, see [License Server](#).
- License files - The license file is a text file containing the product licensing information. It includes License Server name, license expiration date, and other information. For more information, see [License files](#).
- Citrix Licensing Manager - The Citrix Licensing Manager is a web-based management console for Citrix Licensing. For more information, see [Citrix Licensing Manager](#).
- Licensing Services - The Citrix Licensing service is the Windows service responsible for the following core licensing functionality:
  - Citrix Web Services for Licensing
  - Citrix Licensing Support Service
  - Citrix Licensing WMI
  - CITRIX vendor daemon

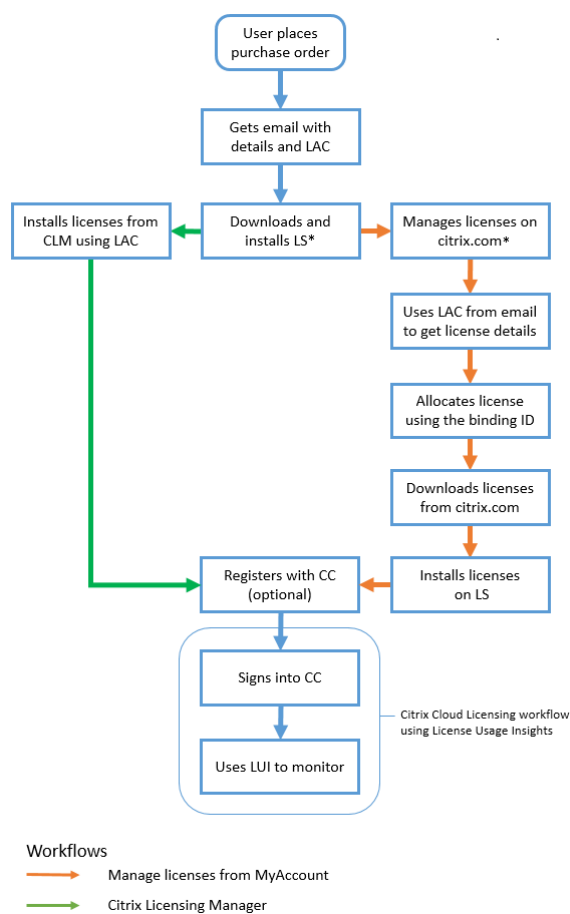
For more information, see [Licensing services](#).

- Product-side settings in your Citrix products that are associated with the License Server.

For more information about licensing components, see [Citrix licensing technical overview](#).

### **Citrix licensing: User workflow**

The following image describes the Citrix licensing workflow.



### Key

\*- Before downloading and installing the License Server, an existing user logs on to citrix.com, while a new user creates a citrix.com account.

CC - Citrix Cloud™

CLM - Citrix Licensing Manager

LAC - License Access Code

LS - License Server

LUI - License Usage Insights

## Licensing 11.17.2 build 47000

September 7, 2025

Citrix® licensing is a system of components that functions together. Before you use any of your Citrix products, learn about licensing components. The Citrix licensing system includes:

- License Server - Every Citrix product environment must have at least one shared or dedicated License Server. Servers running Citrix products contact the License Server to obtain licenses. For more information, see [License Server](#).
- License files - The license file is a text file containing the product licensing information. It includes License Server name, license expiration date, and other information. For more information, see [License files](#).
- Citrix Licensing Manager - The Citrix Licensing Manager is a web-based management console for Citrix Licensing. For more information, see [Citrix Licensing Manager](#).
- Licensing Services - The Citrix Licensing service is the Windows service responsible for the following core licensing functionality:
  - Citrix Web Services for Licensing
  - Citrix Licensing Support Service
  - Citrix Licensing WMI
  - CITRIX vendor daemon

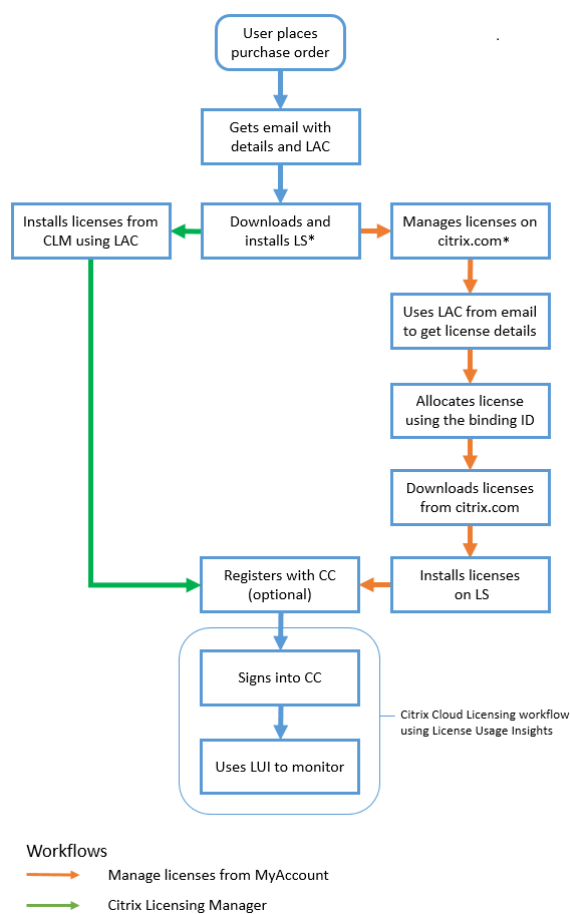
For more information, see [Licensing services](#).

- Product-side settings in your Citrix products that are associated with the License Server.

For more information about licensing components, see [Citrix licensing technical overview](#).

### **Citrix licensing: User workflow**

The following image describes the Citrix licensing workflow.



### Key

\*- Before downloading and installing the License Server, an existing user logs on to citrix.com, while a new user creates a citrix.com account.

CC - Citrix Cloud™

CLM - Citrix Licensing Manager

LAC - License Access Code

LS - License Server

LUI - License Usage Insights

## Licensing 11.17.2 build 46000

September 7, 2025



Citrix® licensing is a system of components that functions together. Before you use any of your Citrix products, learn about licensing components. The Citrix licensing system includes:

- License Server - Every Citrix product environment must have at least one shared or dedicated License Server. Servers running Citrix products contact the License Server to obtain licenses. For more information, see [License Server](#).
- License files - The license file is a text file containing the product licensing information. It includes License Server name, license expiration date, and other information. For more information, see [License files](#).
- Citrix Licensing Manager - The Citrix Licensing Manager is a web-based management console for Citrix Licensing. For more information, see [Citrix Licensing Manager](#).
- Licensing Services - The Citrix Licensing service is the Windows service responsible for the following core licensing functionality:
  - Citrix Web Services for Licensing
  - Citrix Licensing Support Service
  - Citrix Licensing WMI
  - CITRIX vendor daemon

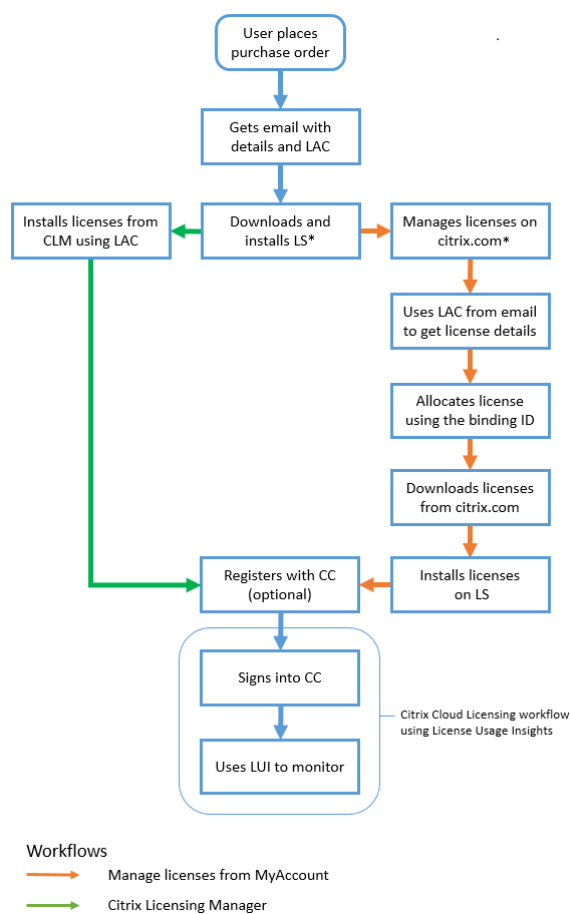
For more information, see [Licensing services](#).

- Product-side settings in your Citrix products that are associated with the License Server.

For more information about licensing components, see [Citrix licensing technical overview](#).

### **Citrix licensing: User workflow**

The following image describes the Citrix licensing workflow.



### Key

\*- Before downloading and installing the License Server, an existing user logs on to citrix.com, while a new user creates a citrix.com account.

CC - Citrix Cloud™

CLM - Citrix Licensing Manager

LAC - License Access Code

LS - License Server

LUI - License Usage Insights

## Licensing 11.17.2 build 45000

September 7, 2025

Citrix® licensing is a system of components that functions together. Before you use any of your Citrix products, learn about licensing components. The Citrix licensing system includes:

- License Server - Every Citrix product environment must have at least one shared or dedicated License Server. Servers running Citrix products contact the License Server to obtain licenses. For more information, see [License Server](#).
- License files - The license file is a text file containing the product licensing information. It includes License Server name, license expiration date, and other information. For more information, see [License files](#).
- Citrix Licensing Manager - The Citrix Licensing Manager is a web-based management console for Citrix Licensing. For more information, see [Citrix Licensing Manager](#).
- Licensing Services - The Citrix Licensing service is the Windows service responsible for the following core licensing functionality:
  - Citrix Web Services for Licensing
  - Citrix Licensing Support Service
  - Citrix Licensing WMI
  - CITRIX vendor daemon

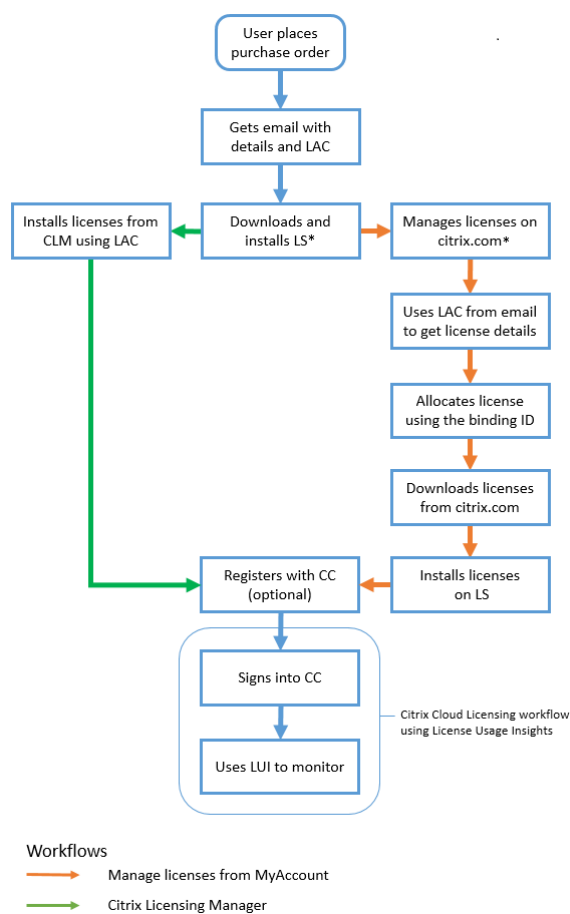
For more information, see [Licensing services](#).

- Product-side settings in your Citrix products that are associated with the License Server.

For more information about licensing components, see [Citrix licensing technical overview](#).

### **Citrix licensing: User workflow**

The following image describes the Citrix licensing workflow.



### Key

\*- Before downloading and installing the License Server, an existing user logs on to citrix.com, while a new user creates a citrix.com account.

CC - Citrix Cloud™

CLM - Citrix Licensing Manager

LAC - License Access Code

LS - License Server

LUI - License Usage Insights

## Licensing 11.17.2 build 44000

September 7, 2025

Citrix® licensing is a system of components that functions together. Before you use any of your Citrix products, learn about licensing components. The Citrix licensing system includes:

- License Server - Every Citrix product environment must have at least one shared or dedicated License Server. Servers running Citrix products contact the License Server to obtain licenses. For more information, see [License Server](#).
- License files - The license file is a text file containing the product licensing information. It includes License Server name, license expiration date, and other information. For more information, see [License files](#).
- Citrix Licensing Manager - The Citrix Licensing Manager is a web-based management console for Citrix Licensing. For more information, see [Citrix Licensing Manager](#).
- Licensing Services - The Citrix Licensing service is the Windows service responsible for the following core licensing functionality:
  - Citrix Web Services for Licensing
  - Citrix Licensing Support Service
  - Citrix Licensing WMI
  - CITRIX vendor daemon

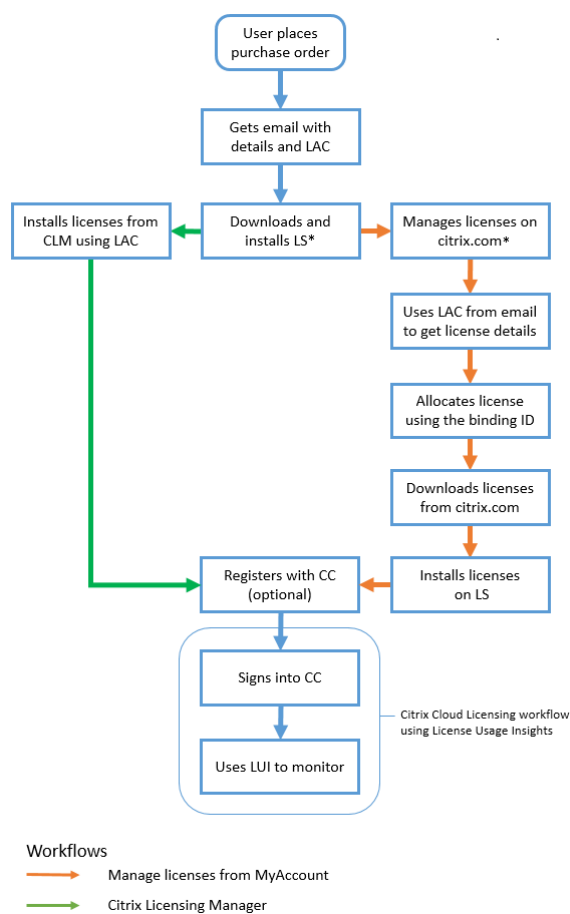
For more information, see [Licensing services](#).

- Product-side settings in your Citrix products that are associated with the License Server.

For more information about licensing components, see [Citrix licensing technical overview](#).

### **Citrix licensing: User workflow**

The following image describes the Citrix licensing workflow.



### Key

\*- Before downloading and installing the License Server, an existing user logs on to citrix.com, while a new user creates a citrix.com account.

CC - Citrix Cloud™

CLM - Citrix Licensing Manager

LAC - License Access Code

LS - License Server

LUI - License Usage Insights

## Licensing 11.17.2 build 43000

September 7, 2025

Citrix® licensing is a system of components that functions together. Before you use any of your Citrix products, learn about licensing components. The Citrix licensing system includes:

- License Server - Every Citrix product environment must have at least one shared or dedicated License Server. Servers running Citrix products contact the License Server to obtain licenses. For more information, see [License Server](#).
- License files - The license file is a text file containing the product licensing information. It includes License Server name, license expiration date, and other information. For more information, see [License files](#).
- Citrix Licensing Manager - The Citrix Licensing Manager is a web-based management console for Citrix Licensing. For more information, see [Citrix Licensing Manager](#).
- Licensing Services - The Citrix Licensing service is the Windows service responsible for the following core licensing functionality:
  - Citrix Web Services for Licensing
  - Citrix Licensing Support Service
  - Citrix Licensing WMI
  - CITRIX vendor daemon

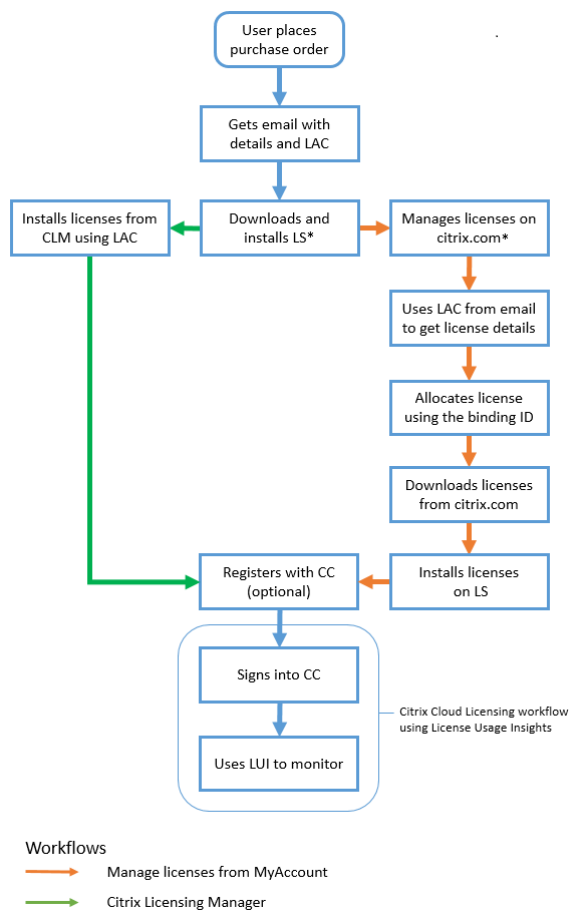
For more information, see [Licensing services](#).

- Product-side settings in your Citrix products that are associated with the License Server.

For more information about licensing components, see [Citrix licensing technical overview](#).

### **Citrix licensing: User workflow**

The following image describes the Citrix licensing workflow.



### Key

\*- Before downloading and installing the License Server, an existing user logs on to citrix.com, while a new user creates a citrix.com account.

CC - Citrix Cloud™

CLM - Citrix Licensing Manager

LAC - License Access Code

LS - License Server

LUI - License Usage Insights

## Licensing 11.17.2 build 42000

September 7, 2025



Citrix® licensing is a system of components that functions together. Before you use any of your Citrix products, learn about licensing components. The Citrix licensing system includes:

- License Server - Every Citrix product environment must have at least one shared or dedicated License Server. Servers running Citrix products contact the License Server to obtain licenses. For more information, see [License Server](#).
- License files - The license file is a text file containing the product licensing information. It includes License Server name, license expiration date, and other information. For more information, see [License files](#).
- Citrix Licensing Manager - The Citrix Licensing Manager is a web-based management console for Citrix Licensing. For more information, see [Citrix Licensing Manager](#).
- Licensing Services - The Citrix Licensing service is the Windows service responsible for the following core licensing functionality:
  - Citrix Web Services for Licensing
  - Citrix Licensing Support Service
  - Citrix Licensing WMI
  - CITRIX vendor daemon

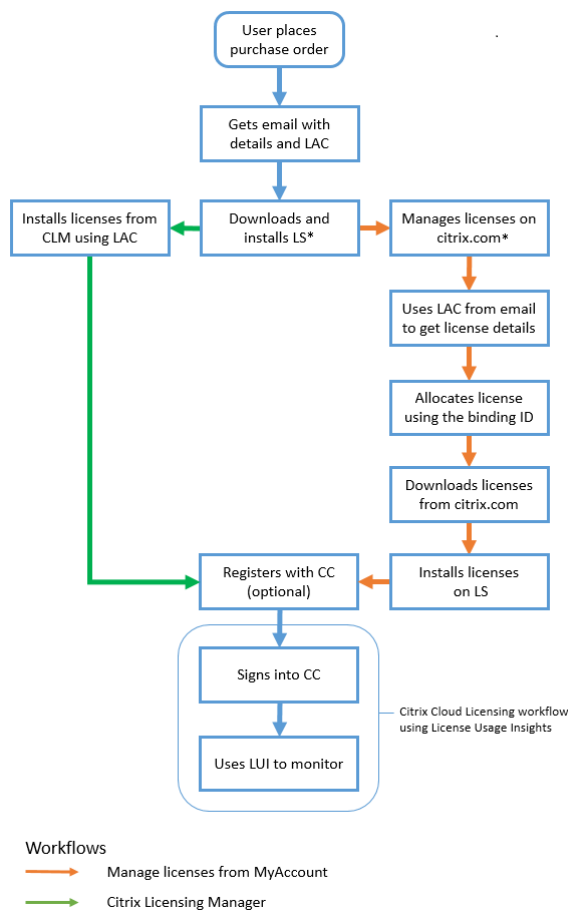
For more information, see [Licensing services](#).

- Product-side settings in your Citrix products that are associated with the License Server.

For more information about licensing components, see [Citrix licensing technical overview](#).

### **Citrix licensing: User workflow**

The following image describes the Citrix licensing workflow.



### Key

\*- Before downloading and installing the License Server, an existing user logs on to citrix.com, while a new user creates a citrix.com account.

CC - Citrix Cloud™

CLM - Citrix Licensing Manager

LAC - License Access Code

LS - License Server

LUI - License Usage Insights

## Licensing 11.17.2 build 41000

September 7, 2025

Citrix® licensing is a system of components that functions together. Before you use any of your Citrix products, learn about licensing components. The Citrix licensing system includes:

- License Server - Every Citrix product environment must have at least one shared or dedicated License Server. Servers running Citrix products contact the License Server to obtain licenses. For more information, see [License Server](#).
- License files - The license file is a text file containing the product licensing information. It includes License Server name, license expiration date, and other information. For more information, see [License files](#).
- Citrix Licensing Manager - The Citrix Licensing Manager is a web-based management console for Citrix Licensing. For more information, see [Citrix Licensing Manager](#).
- Licensing Services - The Citrix Licensing service is the Windows service responsible for the following core licensing functionality:
  - Citrix Web Services for Licensing
  - Citrix Licensing Support Service
  - Citrix Licensing WMI
  - CITRIX vendor daemon

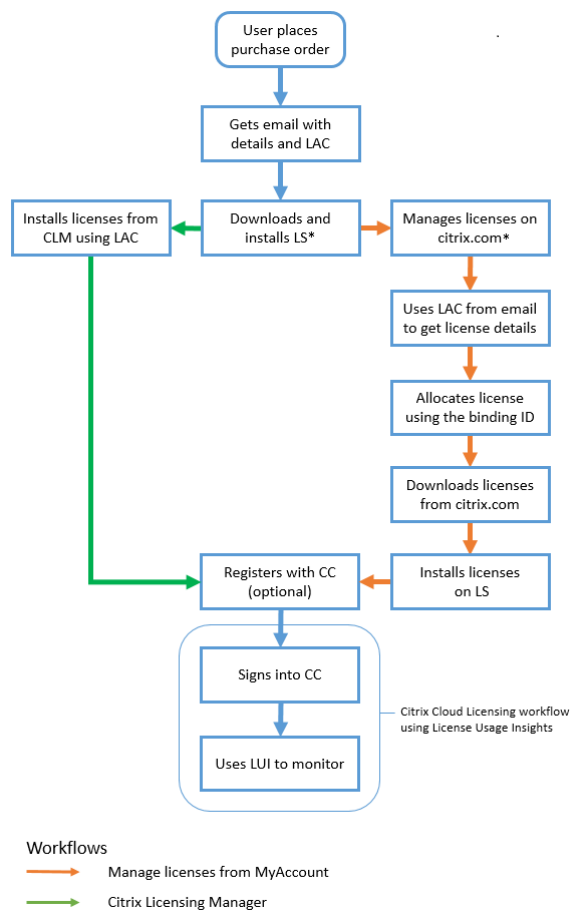
For more information, see [Licensing services](#).

- Product-side settings in your Citrix products that are associated with the License Server.

For more information about licensing components, see [Citrix licensing technical overview](#).

### **Citrix licensing: User workflow**

The following image describes the Citrix licensing workflow.



### Key

\*- Before downloading and installing the License Server, an existing user logs on to citrix.com, while a new user creates a citrix.com account.

CC - Citrix Cloud™

CLM - Citrix Licensing Manager

LAC - License Access Code

LS - License Server

LUI - License Usage Insights

## Licensing 11.17.2 build 40000

September 7, 2025

Citrix® licensing is a system of components that functions together. Before you use any of your Citrix products, learn about licensing components. The Citrix licensing system includes:

- License Server - Every Citrix product environment must have at least one shared or dedicated License Server. Servers running Citrix products contact the License Server to obtain licenses. For more information, see [License Server](#).
- License files - The license file is a text file containing the product licensing information. It includes License Server name, license expiration date, and other information. For more information, see [License files](#).
- Citrix Licensing Manager - The Citrix Licensing Manager is a web-based management console for Citrix Licensing. For more information, see [Citrix Licensing Manager](#).
- Licensing Services - The Citrix Licensing service is the Windows service responsible for the following core licensing functionality:
  - Citrix Web Services for Licensing
  - Citrix Licensing Support Service
  - Citrix Licensing WMI
  - CITRIX vendor daemon

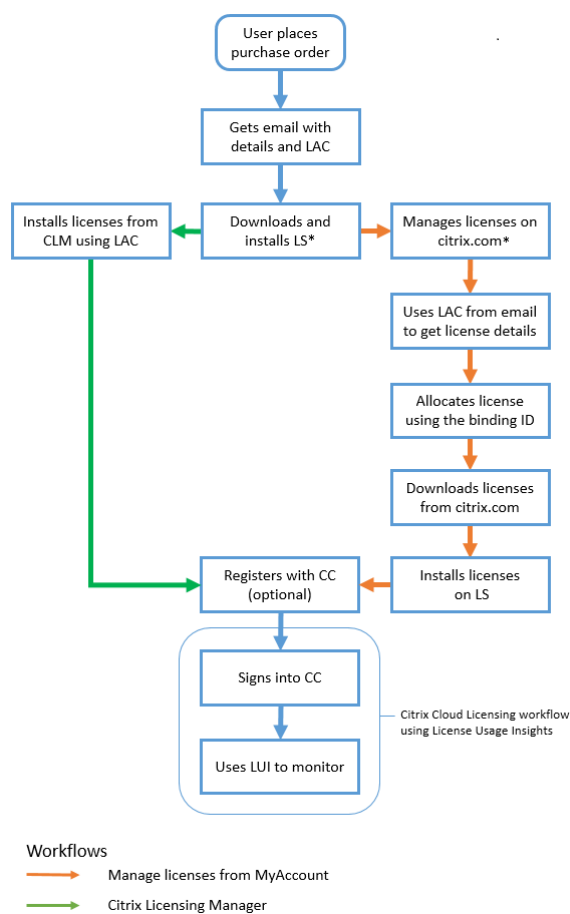
For more information, see [Licensing services](#).

- Product-side settings in your Citrix products that are associated with the License Server.

For more information about licensing components, see [Citrix licensing technical overview](#).

### **Citrix licensing: User workflow**

The following image describes the Citrix licensing workflow.



### Key

\*- Before downloading and installing the License Server, an existing user logs on to citrix.com, while a new user creates a citrix.com account.

CC - Citrix Cloud™

CLM - Citrix Licensing Manager

LAC - License Access Code

LS - License Server

LUI - License Usage Insights

## Licensing 11.17.2 build 39000

September 7, 2025

Citrix® licensing is a system of components that functions together. Before you use any of your Citrix products, learn about licensing components. The Citrix licensing system includes:

- License Server - Every Citrix product environment must have at least one shared or dedicated License Server. Servers running Citrix products contact the License Server to obtain licenses. For more information, see [License Server](#).
- License files - The license file is a text file containing the product licensing information. It includes License Server name, license expiration date, and other information. For more information, see [License files](#).
- Citrix Licensing Manager - The Citrix Licensing Manager is a web-based management console for Citrix Licensing. For more information, see [Citrix Licensing Manager](#).
- Licensing Services - The Citrix Licensing service is the Windows service responsible for the following core licensing functionality:
  - Citrix Web Services for Licensing
  - Citrix Licensing Support Service
  - Citrix Licensing WMI
  - CITRIX vendor daemon

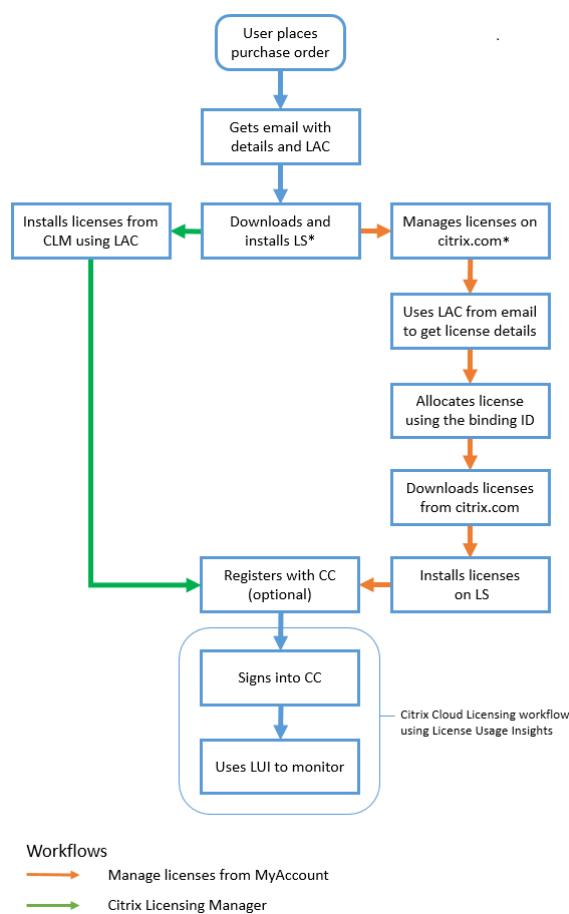
For more information, see [Licensing services](#).

- Product-side settings in your Citrix products that are associated with the License Server.

For more information about licensing components, see [Citrix licensing technical overview](#).

### **Citrix licensing: User workflow**

The following image describes the Citrix licensing workflow.



### Key

\*- Before downloading and installing the License Server, an existing user logs on to citrix.com, while a new user creates a citrix.com account.

CC - Citrix Cloud™

CLM - Citrix Licensing Manager

LAC - License Access Code

LS - License Server

LUI - License Usage Insights

## Licensing 11.17.2 build 37000

September 7, 2025



Citrix® licensing is a system of components that functions together. Before you use any of your Citrix products, learn about licensing components. The Citrix licensing system includes:

- License Server - Every Citrix product environment must have at least one shared or dedicated License Server. Servers running Citrix products contact the License Server to obtain licenses. For more information, see [License Server](#).
- License files - The license file is a text file containing the product licensing information. It includes License Server name, license expiration date, and other information. For more information, see [License files](#).
- Citrix Licensing Manager - The Citrix Licensing Manager is a web-based management console for Citrix Licensing. For more information, see [Citrix Licensing Manager](#).
- Licensing Services - The Citrix Licensing service is the Windows service responsible for the following core licensing functionality:
  - Citrix Web Services for Licensing
  - Citrix Licensing Support Service
  - Citrix Licensing WMI
  - CITRIX vendor daemon

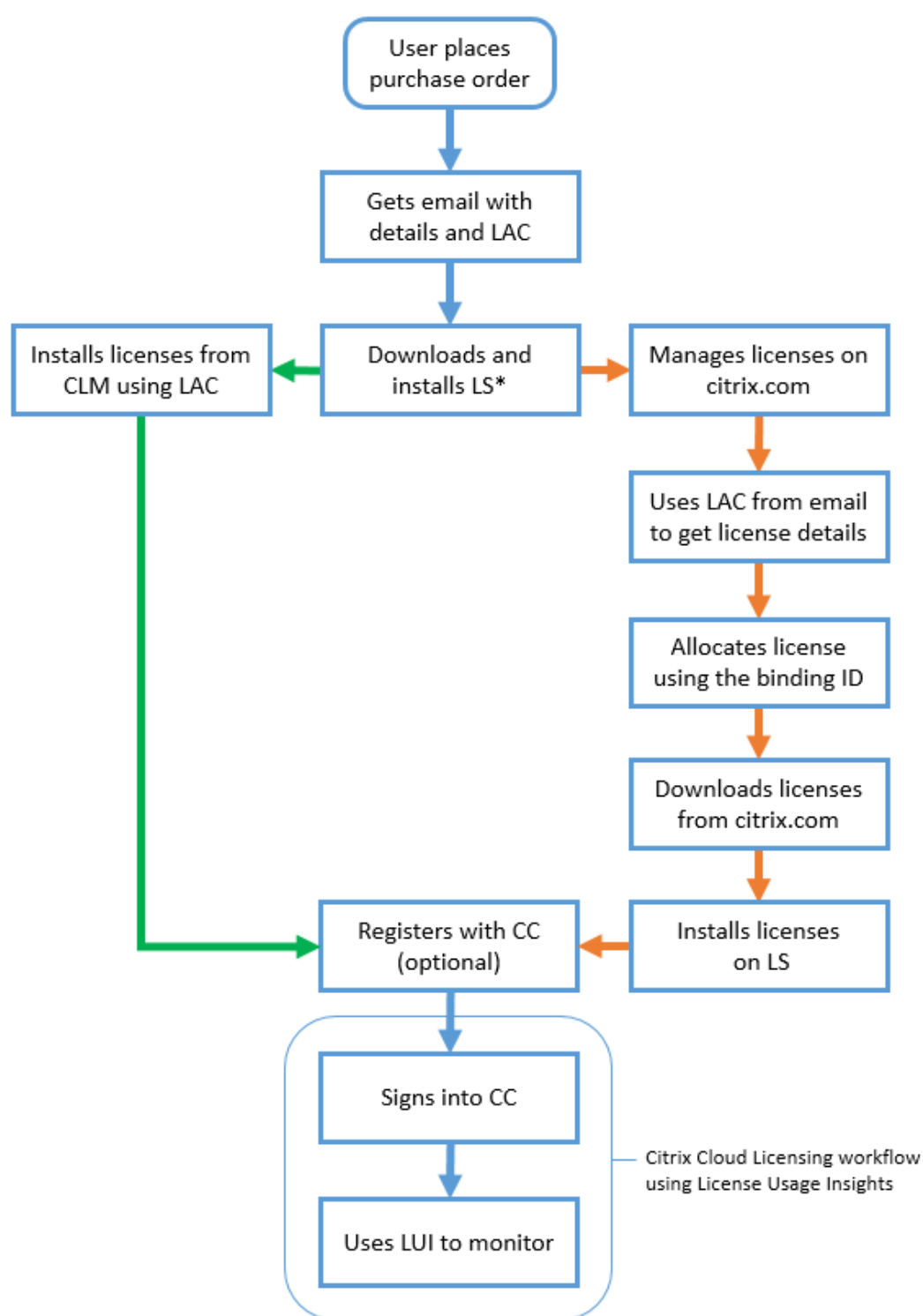
For more information, see [Licensing services](#).

- Product-side settings in your Citrix products that are associated with the License Server.

For more information about licensing components, see [Citrix licensing technical overview](#).

### **Citrix licensing: User workflow**

The following image describes the Citrix licensing workflow.



#### Workflows

- Manage licenses from MyAccount
- Citrix Licensing Manager

### Key

\*- Before downloading and installing the License Server, an existing user logs on to citrix.com, while a new user creates a citrix.com account.

CC - Citrix Cloud™

CLM - Citrix Licensing Manager

LAC - License Access Code

LS - License Server

LUI - License Usage Insights

## Licensing 11.17.2 build 36000

September 7, 2025

Citrix® licensing is a system of components that functions together. Before you use any of your Citrix products, learn about licensing components. The citrix licensing system includes:

- License Server - Every Citrix product environment must have at least one shared or dedicated License Server. Servers running Citrix products contact the License Server to obtain licenses. For more information, see [License Server](#).
- License files - The license file is a text file containing the product licensing information. It includes License Server name, license expiration date, and other information. For more information, see [License files](#).
- Citrix Licensing Manager - The Citrix Licensing Manager is a web-based management console for Citrix Licensing. For more information, see [Citrix Licensing Manager](#).
- Licensing Services - The Citrix Licensing service is the Windows service responsible for the following core licensing functionality:
  - Citrix Web Services for Licensing
  - Citrix Licensing Support Service
  - Citrix Licensing WMI
  - CITRIX vendor daemon

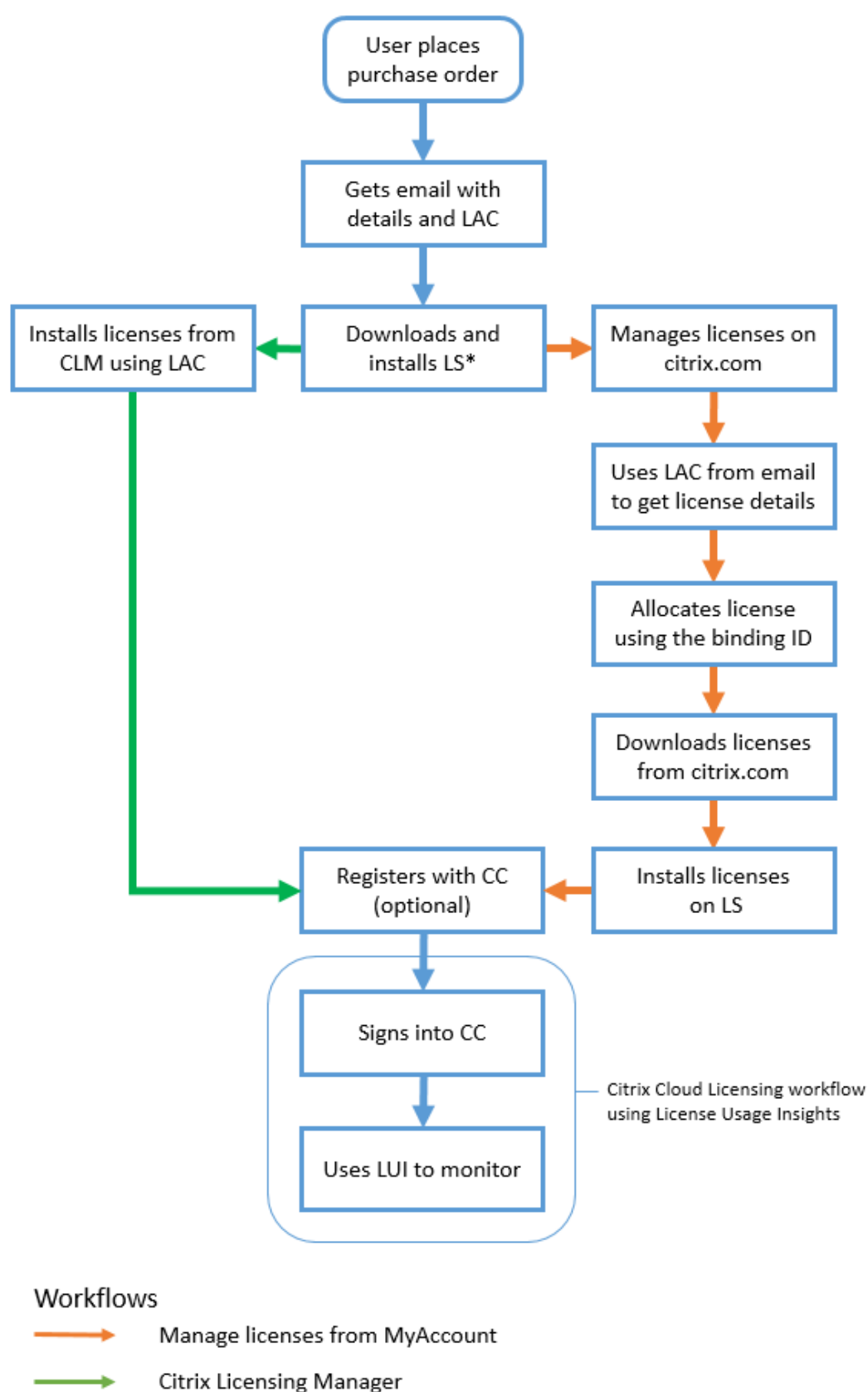
For more information, see [Licensing services](#).

- Product-side settings in your Citrix products that are associated with the License Server.

For more information about licensing components, see [Citrix licensing technical overview](#).

### **Citrix licensing: User workflow**

The following image describes the Citrix licensing workflow.



### Key

\*- Before downloading and installing the License Server, an existing user logs on to citrix.com, while a new user creates a citrix.com account.

CC - Citrix Cloud™

CLM - Citrix Licensing Manager

LAC - License Access Code

LS - License Server

LUI - License Usage Insights

## Licensing 11.17.2 build 35000

September 7, 2025

Citrix® licensing is a system of components that functions together. Before you use any of your Citrix products, learn about licensing components. The Citrix licensing system includes:

- License Server - Every Citrix product environment must have at least one shared or dedicated License Server. Servers running Citrix products contact the License Server to obtain licenses. For more information, see [License Server](#).
- License files - The license file is a text file containing the product licensing information. It includes License Server name, license expiration date, and other information. For more information, see [License files](#).
- Citrix Licensing Manager - The Citrix Licensing Manager is a web-based management console for Citrix Licensing. For more information, see [Citrix Licensing Manager](#).
- Licensing Services - The Citrix Licensing service is the Windows service responsible for the following core licensing functionality:
  - Citrix Web Services for Licensing
  - Citrix Licensing Support Service
  - Citrix Licensing WMI
  - CITRIX vendor daemon

For more information, see [Licensing services](#).

- Product-side settings in your Citrix products that are associated with the License Server.

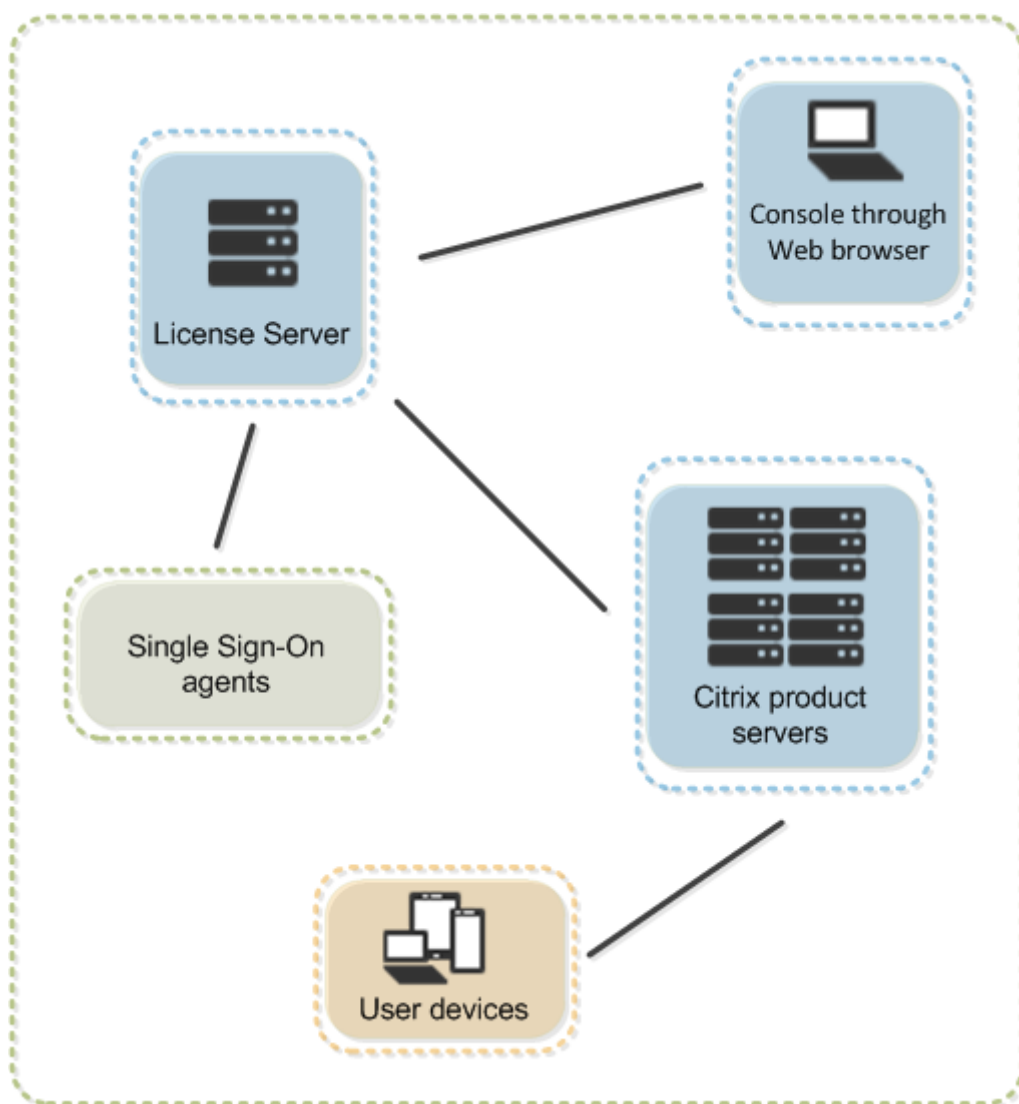
For more information about licensing components, see [Citrix licensing technical overview](#).

## Licensing 11.16.6

Every Citrix product environment must have at least one shared or dedicated License Server. License servers are computers that are partly or fully dedicated to storing and managing licenses. Citrix products request licenses from a License Server if users attempt to connect.

Servers running Citrix products contact the License Server to obtain licenses.

If users connect to a Citrix product, it draws licenses from the License Server. The Citrix product requests to check out a license from the License Server on behalf of the user or client device. When the license is successfully checked out, the user can run the product.



Depending on the size and configuration of your product deployment, you might deploy licensing on a server shared with other applications, a dedicated License Server, or multiple License Servers.

License files must be on the License Server that is associated with the product you are licensing. The

product must be configured to communicate with that specific License Server. The Citrix Licensing Manager lets you manage and monitor your Citrix licenses by providing a user interface to the License Server. You can view licenses and alerts, import license files, create historical usage reports, and manage License Server settings.

### Product-specific licensing information

- [Citrix ADC](#)
- [Citrix Cloud](#)
- [Citrix Endpoint Management](#)
- [Citrix Gateway](#)
- [Citrix Hypervisor](#)
- [Citrix Virtual Apps and Desktops](#)

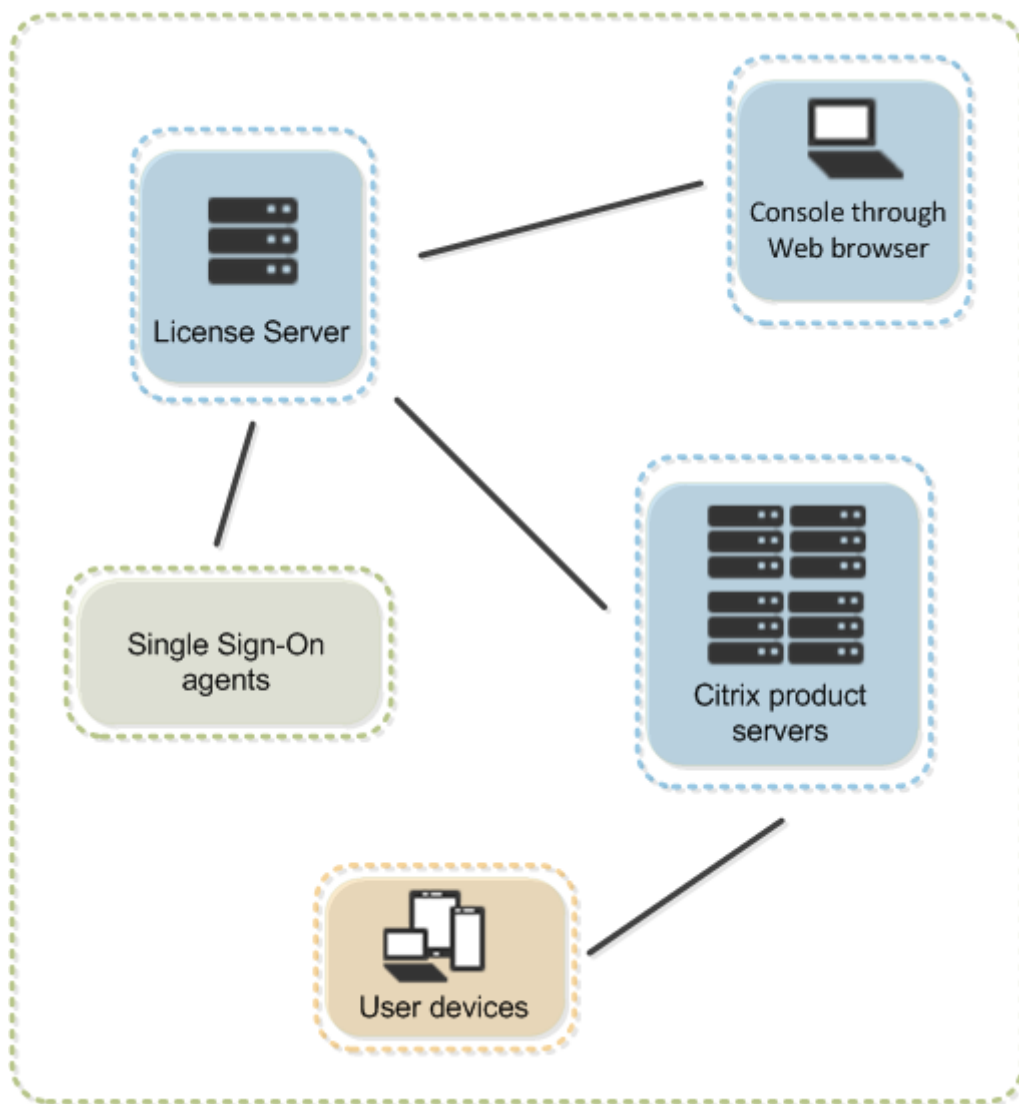
### Licensing 11.16.3

Every Citrix product environment must have at least one shared or dedicated License Server. License servers are computers that are partly or fully dedicated to storing and managing licenses. Citrix products request licenses from a License Server if users attempt to connect.

Servers running Citrix products contact the License Server to obtain licenses.

If users connect to a Citrix product, it draws licenses from the License Server. The Citrix product requests to check out a license from the License Server on behalf of the user or client device. When the license is successfully checked out, the user can run the product.





Depending on the size and configuration of your product deployment, you might deploy licensing on a server shared with other applications, a dedicated License Server, or multiple License Servers.

License files must be on the License Server that is associated with the product you are licensing. The product must be configured to communicate with that specific License Server. The Citrix Licensing Manager lets you manage and monitor your Citrix licenses by providing a user interface to the License Server. You can view licenses and alerts, import license files, create historical usage reports, and manage License Server settings.

### Product-specific licensing information

- [Citrix ADC](#)
- [Citrix Cloud](#)
- [Citrix Endpoint Management](#)

- [Citrix Gateway](#)
- [Citrix Hypervisor](#)
- [Citrix Virtual Apps and Desktops](#)

## Licensing 11.15

August 22, 2024

[Licensing 11.15](#) (PDF Download)

Documentation for this product version is provided as a PDF because it is not the latest version. For the most recently updated content, see the [Licensing](#) current release documentation. That documentation includes instructions for upgrading from earlier versions.

**Note:**

Links to external websites found in the PDF take you to the correct pages, but links to other sections within the PDF are no longer usable.

Every Citrix product environment must have at least one shared or dedicated License Server. License servers are computers that are partly or fully dedicated to storing and managing licenses. Citrix products request licenses from a License Server if users attempt to connect.



© 2025 Cloud Software Group, Inc. All rights reserved. This document is subject to U.S. and international copyright laws and treaties. No part of this document may be reproduced in any form without the written authorization of Cloud Software Group, Inc. This and other products of Cloud Software Group may be covered by registered patents. For details, please refer to the Virtual Patent Marking document located at <https://www.cloud.com/legal>. Citrix, the Citrix logo, NetScaler, and the NetScaler logo and other marks appearing herein are either registered trademarks or trademarks of Cloud Software Group, Inc. and/or its subsidiaries in the United States and/or other countries. Other marks are the property of their respective owner(s) and are mentioned for identification purposes only. Please refer to Cloud SG's Trademark Guidelines and Third Party Trademark Notices (<https://www.cloud.com/legal>) for more information.