



NetScaler with Unified Gateway

Configuring Ariba

Abstract

Configuring Ariba for SSO enables administrators to manage their users using NetScaler.

Contents

- ABSTRACT 0
- CONTENTS 1
- DISCLAIMER (DOCUMENTATION) 2
- PREFACE 3
- OVERVIEW 4
- CONFIGURING ARIBA FOR SINGLE SIGN-ON 4
- CONFIGURING NETSCALER FOR SINGLE SIGN-ON 5
- TESTING THE CONFIGURATION 9

Disclaimer (Documentation)

This document is furnished "AS IS." Citrix Systems, Inc. disclaims all warranties regarding the contents of this document, including, but not limited to, implied warranties of merchantability and fitness for any particular purpose. This document may contain technical or other inaccuracies or typographical errors. Citrix System, Inc. reserves the right to revise the information in this document at any time without notice. This document and the software described in this document constitute confidential information of Citrix Systems, Inc. and its licensors, and are furnished under a license from Citrix Systems, Inc.

Citrix Systems, Inc., the Citrix logo, and Citrix Provisioning Services are trademarks of Citrix Systems, Inc. and/or one or more of its subsidiaries, and may be registered in the United States Patent and Trademark office and in other countries. All other trademarks and registered trademarks are property of their respective owners.

Microsoft and Windows are either registered trademarks or trademarks of Microsoft Corporation in the United States and/or other countries.

Preface

This section provides an overview about the information included in this guide.

Intended Audience

The information in this guide is intended for the System Administrators.

Document Conventions

The following table lists various conventions used in this guide.

Table 1: Document conventions used in this guide

Convention	Description
Bold	Used for names of interface elements (such as names of fields, panes, windows, menus, buttons, dialog boxes) and what the user specifically selects, clicks, presses, or types.
Note	Used to highlight information that is important.

Overview

The Citrix NetScaler application delivery controller (ADC) helps to load balance, accelerate, optimize, and secure enterprise applications.

SAP Ariba provides Ariba Network and SAP Ariba procurement software to collaborate effectively on spend management, contract management, supplier management, and financial supply chain management.

You can connect Ariba with NetScaler by using your company's credentials to log on to your account via Single Sign-On (SSO).

Configuring Ariba for Single Sign-On

Configuring Ariba for SSO enables administrators to manage their users using NetScaler. Users can securely log on to Ariba using their enterprise credentials.

To configure Ariba for SSO through SAML, follow the steps below:

1. Send an email to the SAP Ariba support team at customer_support_sr_update@sap.com to enable SAML 2.0 for your account and complete SP-initiated SSO.

The support team responds with the required information.

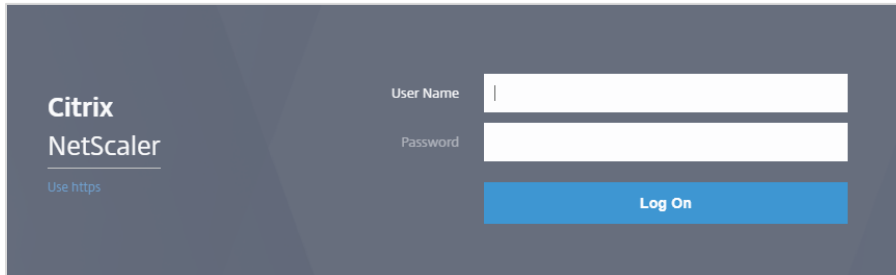
2. Note the Assertion Consumer Service URL and other values to use those values while configuring NetScaler for SSO.

Configuring NetScaler for Single Sign-On

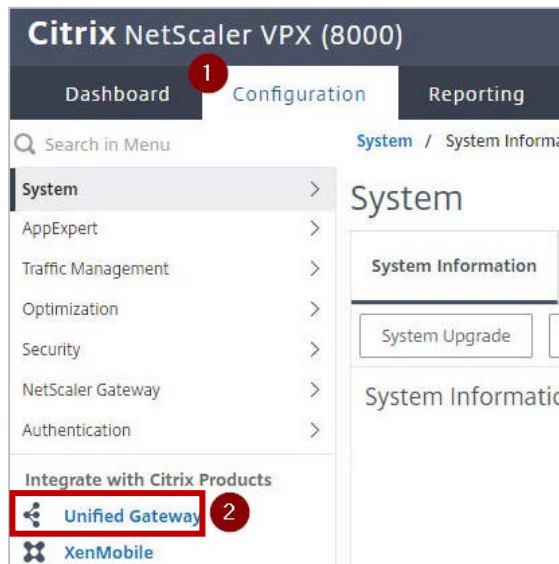
For configuring NetScaler for Ariba, you must retrieve and set specific values such as assertion consumer URL, and entity ID.

To configure NetScaler for single sign on through SAML, complete the following steps:

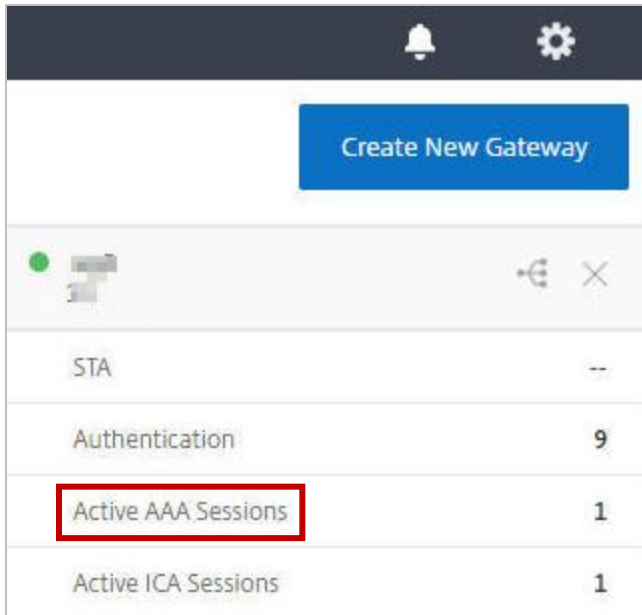
1. Connect to VPN using NetScaler with Unified Gateway.
2. Log on to NetScaler using your user name and password.



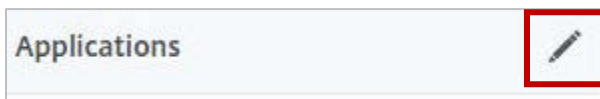
3. Click **Configuration > Unified Gateway**.



4. In the **Dashboard** area, click the configured NetScaler Gateway appliance.



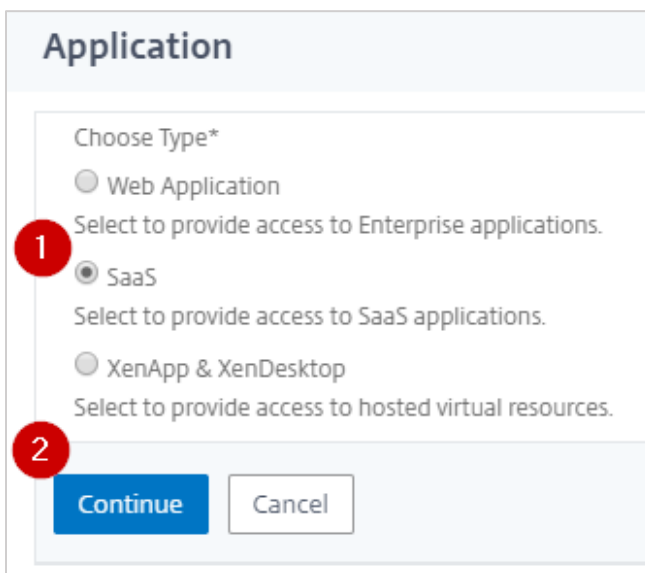
5. Click the edit icon for **Applications** section.



6. For adding a SaaS application, click the plus icon **+** that appears in the edit mode.



7. Click **SaaS > Continue**.



8. Click **Choose from Catalog**.
9. In the **Choose from Catalog** list, click **Ariba**.

SaaS Application: Catalog vs. Customized

Choose from Catalog Customized Application

Choose from Catalog*

Ariba

Continue Cancel

10. Click **Continue**.
11. In the **Create Application from Template** section, type the name of your SaaS application, in this case Ariba, and relevant comments.

Name*

Ariba

Comments

12. In the subsequent area, specify the following information:

ARIBA

Service Provider Login URL*

Service Provider ID*

Assertion Consumer Service Url*

SP Certificate Name

IDP Certificate Name*

Issuer Name

Continue Cancel

- i. **Service Provider Login URL** – type the URL in https://<your-organization>.ariba.com format.
Note: For example, if the organization’s URL is https://myserver.ariba.com, you must replace <your-organization> with myserver.
- ii. **Service Provider ID** – type a unique identifier.
- iii. **Assertion Consumer Service Url*** - type the URL shared by the Ariba support team.
Note: By default, Ariba does not validate the assertion ID and the Audience value in the SAML Response.
- iv. **SP Certificate Name** – click the appropriate certificate name. To obtain this value, refer to information shared by the Ariba support team.
- v. **IdP Certificate Name** – click the appropriate certificate name.
The IdP certificate appears last in the hierarchy in the **Server Certificate** section on **Unified Gateway Configuration** page.
- vi. **Issuer Name** – type a unique issuer ID. For example: MyServer_NS_Ariba
- vii. Click **Continue**.

13. Click **Done**.

The Ariba logo appears.

14. Click **Done**.

You have completed the NetScaler configuration for Ariba.

Testing the Configuration

Testing the IdP Initiated Flow

To test the IdP initiated configuration, follow the steps below:

1. Access the IdP URL.
2. Log on to NetScaler appliance using your enterprise credentials.
3. Click **Clientless Access**.
4. On the home page, click **Apps** tab.
5. Click **Ariba**.
Your Ariba profile appears.
You have completed testing the IdP initiated flow.



Locations

Corporate Headquarters | 851 Cypress Creek Road Fort Lauderdale, FL 33309, United States
Silicon Valley | 4988 Great America Parkway Santa Clara, CA 95054, United States

© 2018 Citrix Systems, Inc. All rights reserved. Citrix, the Citrix logo, and other marks appearing herein are property of Citrix Systems, Inc. and/or one or more of its subsidiaries, and may be registered with the U.S. Patent and Trademark Office and in other countries. All other marks are the property of their respective owner(s).